

RASSF2 Rabbit pAb

货号: **AYP18241**

产品信息

反应	Mouse,Rat
宿主	Rabbit
克隆性	Polyclonal
预测反应	
应用	WB
推荐浓度	WB: 1:500 - 1:2000
理论分子量	17kDa/37kDa
实测分子量	38kDa
形式	Liquid
保存条件	Store at -20°C. Avoid freeze / thaw cycles. Buffer: PBS with 0.01% thiomersal,50% glycerol,pH7.3.
偶联物	Unconjugated
阳性对照	Mouse lung,Rat lung
细胞定位	Cytoplasm,Nucleus
纯化	Affinity purification

抗原信息

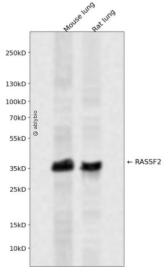
抗原信息	Recombinant fusion protein containing a sequence corresponding to amino acids 70-160 of human RASSF 2 (NP_055552.1).
序列	MQDDNERIRPPSSSSWHS GCNLGAQGTTLKPLTPKQISEVDAPPEGDQMPSTDSRGLKPLQEDTPQLMRTRSDV GVRRRGNVRTPSD

靶点信息

研究背景	This gene encodes a protein that contains a Ras association domain. Similar to its cattle and sheep counterparts, this gene is located near the prion gene. Two alternatively spliced transcripts encoding the same isoform have been reported.
基因ID	9770

基因名	RASSF2
Swiss	P50749
别名	RASSF2;CENP-34;RASFADIN

产品验证



Western blot analysis of RASSF2 expressed in Mouse lung,Rat lung using RASSF2 Rabbit pAb at 1:1000. Secondary antibody: HRP Goat Anti-Rabbit IgG (H+L) at 1:5000. Lysates/proteins: 30ug per lane. Blocking buffer: 5% non-fat dry milk in TBST. Detection: ECL Enhanced Kit. Exposure time: 120s.

实验步骤

访问官网浏览详情: www.ablybio.cn