

# MPHOSP6 Rabbit pAb

货号: **AYP18236**

## 产品信息

反应	Human,Mouse,Rat
宿主	Rabbit
克隆性	Polyclonal
预测反应	
应用	WB
推荐浓度	<b>WB:</b> 1:500 - 1:2000
理论分子量	19kDa
实测分子量	22kDa,23kDa
形式	Liquid
保存条件	Store at -20°C. Avoid freeze / thaw cycles. Buffer: PBS with 0.01% thiomersal,50% glycerol,pH7.3.
偶联物	Unconjugated
阳性对照	U-251MG,A-549,HepG2,Jurkat,HeLa,Raji,Mouse brain,Mouse lung,Rat brain
细胞定位	Cytoplasm,Nucleus,nucleolus
纯化	Affinity purification

## 抗原信息

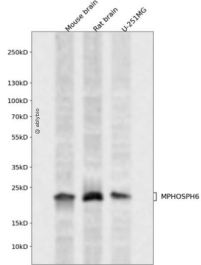
抗原信息	Recombinant fusion protein containing a sequence corresponding to amino acids 1-160 of human MPHOS PH6 (NP_005783.2).
序列	MAAERKTRLSKNLLRMKFMQRGLDSETKKQLEEEKKIIEEHWYLDLPELKEKESFIIIEEQSFLLCEDLLYGRMSFRGFNPE VEKLMLQMNAKHKAEEVEDETVELDVSDDEEMARRYETLVGTIGKKFARKRDHANYEEDENGDITPIKAKKMFLKPQD

## 靶点信息

研究背景	RNA-binding protein that associates with the RNA exosome complex. Involved in the 3'-processing of the 7S pre-rRNA to the mature 5.8S rRNA and play a role in recruiting the RNA exosome complex to pre-rRNA; this function may include C1D.
基因ID	10200

基因名	MPHOSPH6
Swiss	Q99547
别名	MPHOSPH6;MPP;MPP-6;MPP6

## 产品验证



Western blot analysis of MPHOSPH6 expressed in Mouse brain,Rat brain,U-251MG using MPHOSPH6 Rabbit pAb at 1:1000. Secondary antibody: HRP Goat Anti-Rabbit IgG (H+L) at 1:5000. Lysates/proteins: 30ug per lane. Blocking buffer: 5% non-fat dry milk in TBST. Detection: ECL Enhanced Kit. Exposure time: 120s.

## 实验步骤

访问官网浏览详情: [www.ablybio.cn](http://www.ablybio.cn)