

SEC61B Rabbit pAb

货号: **AYP18225**

产品信息

反应	Human,Mouse,Rat
宿主	Rabbit
克隆性	Polyclonal
预测反应	
应用	WB IF/ICC
推荐浓度	WB: 1:500 - 1:2000 IF/ICC: 1:50 - 1:200
理论分子量	9kDa
实测分子量	12KDa
形式	Liquid
保存条件	Store at -20°C. Avoid freeze / thaw cycles. Buffer: PBS with 0.01% thiomersal,50% glycerol,pH7.3.
偶联物	Unconjugated
阳性对照	HeLa,HepG2,SH-SY5Y,Mouse stomach,Rat liver,Rat stomach
细胞定位	Endoplasmic reticulum membrane,Single-pass membrane protein
纯化	Affinity purification

抗原信息

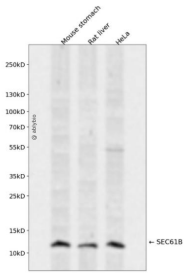
抗原信息	A synthetic peptide corresponding to a sequence within amino acids 1-96 of human SEC61B (NP_006799.1).
序列	MPGPTPSGTNVGSSGRSPSKAVAARAAGSTVRQRKNASCGTRSAGRRTTSAGTGGMWRFYTEDSPGLKVGPPVPLVMSLLFIASVFMHLHIWGKYTRS

靶点信息

研究背景	The Sec61 complex is the central component of the protein translocation apparatus of the endoplasmic reticulum (ER) membrane. Oligomers of the Sec61 complex form a transmembrane channel where proteins are translocated across and integrated into the ER membrane. This complex consists of three membrane proteins- alpha, beta, and gamma. This gene encodes the beta-subunit protein. The Sec61 subunits are also observed in the post-ER compartment, suggesting that these proteins can escape the ER and recycle back. There is evidence for multiple polyadenylated sites for this transcript.
------	--

基因ID	10952
基因名	SEC61B
Swiss	P60468
别名	SEC61B

产品验证



Western blot analysis of SEC61B expressed in Mouse stomach,Rat liver,HeLa using SEC61B Rabbit pAb at 1:1000. Secondary antibody: HRP Goat Anti-Rabbit IgG (H+L) at 1:5000. Lysates/proteins: 30ug per lane. Blocking buffer: 5% non-fat dry milk in TBST. Detection: ECL Enhanced Kit. Exposure time: 120s.

实验步骤

访问官网浏览详情: www.ablybio.cn