

ME3 Rabbit pAb

货号: **AYP18224**

产品信息

| | |
|-------|--|
| 反应 | Human,Mouse,Rat |
| 宿主 | Rabbit |
| 克隆性 | Polyclonal |
| 预测反应 | |
| 应用 | WB IHC IF/ICC |
| 推荐浓度 | WB: 1:500 - 1:2000 IHC: 1:50 - 1:200 IF/ICC: 1:50 - 1:200 |
| 理论分子量 | 38kDa/67kDa |
| 实测分子量 | 78kDa |
| 形式 | Liquid |
| 保存条件 | Store at -20°C. Avoid freeze / thaw cycles. Buffer: PBS with 0.01% thiomersal,50% glycerol,pH7.3. |
| 偶联物 | Unconjugated |
| 阳性对照 | HT-29,293T,Mouse brain,Mouse heart,Mouse kidney,Rat brain,Rat heart,Rat kidney |
| 细胞定位 | Mitochondrion matrix |
| 纯化 | Affinity purification |

抗原信息

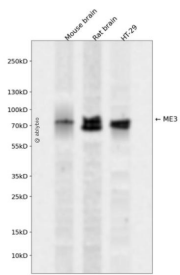
| | |
|------|--|
| 抗原信息 | Recombinant fusion protein containing a sequence corresponding to amino acids 505-604 of human ME3 (NP_001014811.1). |
| 序列 | IRHIPDEIFLLTAEQIAQEVSEQHLSQGRLYPPLSTIRDVSLRIAIVLDYAYKHNLASYPPEPKDKEAFVRSVLVYTPDYDSFTLDSYTWPKIAMNVQTV |

靶点信息

| | |
|------|--|
| 研究背景 | Malic enzyme catalyzes the oxidative decarboxylation of malate to pyruvate using either NAD ⁺ or NADP ⁺ as a cofactor. Mammalian tissues contain 3 distinct isoforms of malic enzyme: a cytosolic NADP(+)-dependent isoform, a mitochondrial NADP(+)-dependent isoform, and a mitochondrial NAD(+)-dependent isoform. This gene encodes a mitochondrial NADP(+)-dependent isoform. Multiple alternatively spliced transcript variants have been found for this gene, but the biological validity of some variants has not been determined. |
|------|--|

| | |
|-------|-------------|
| 基因ID | 10873 |
| 基因名 | ME3 |
| Swiss | Q16798 |
| 别名 | ME3;NADP-ME |

产品验证



Western blot analysis of ME3 expressed in Mouse brain,Rat brain,HT-29 using ME3 Rabbit pAb at 1:1000 . Secondary antibody: HRP Goat Anti-Rabbit IgG (H+L) at 1:5000. Lysates/proteins: 30ug per lane. Blocking buffer: 5% non-fat dry milk in TBST. Detection: ECL Enhanced Kit. Exposure time: 120s.

实验步骤

访问官网浏览详情: www.ablybio.cn