

# LYPLA2 Rabbit pAb

货号: **AYP18221**

## 产品信息

反应	Human,Mouse,Rat
宿主	Rabbit
克隆性	Polyclonal
预测反应	
应用	WB
推荐浓度	<b>WB:</b> 1:500 - 1:2000
理论分子量	24kDa
实测分子量	25kDa
形式	Liquid
保存条件	Store at -20°C. Avoid freeze / thaw cycles. Buffer: PBS with 0.01% thiomersal,50% glycerol,pH7.3.
偶联物	Unconjugated
阳性对照	293T,HT-29,Raji,Mouse thymus,Mouse brain,Rat lung
细胞定位	Cytoplasm
纯化	Affinity purification

## 抗原信息

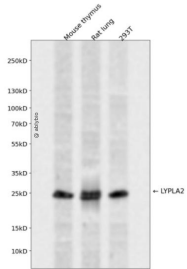
抗原信息	Recombinant fusion protein containing a sequence corresponding to amino acids 147-231 of human LYPLA2 (NP_009191.1).
序列	CWLPLHRAFPQAANGSAKDLAILQCHGELDPMVPVRFGALTAEKLRVSVTPARVQFKTYPGVMHSSCPQEMAAVKEFLEKLLPPV

## 靶点信息

研究背景	Lysophospholipases are enzymes that act on biological membranes to regulate the multifunctional lysophospholipids. There are alternatively spliced transcript variants described for this gene but the full length nature is not known yet.
基因ID	11313

基因名	LYPLA2
Swiss	O95372
别名	LYPLA2;APT-2;APT2;DJ886K2.4

## 产品验证



Western blot analysis of LYPLA2 expressed in Mouse thymus,Rat lung,293T using LYPLA2 Rabbit pAb at 1:1000. Secondary antibody: HRP Goat Anti-Rabbit IgG (H+L) at 1:5000. Lysates/proteins: 30ug per lane. Blocking buffer: 5% non-fat dry milk in TBST. Detection: ECL Enhanced Kit. Exposure time: 120s.

## 实验步骤

访问官网浏览详情: [www.ablybio.cn](http://www.ablybio.cn)