

CHP1 Rabbit pAb

货号: **AYP18220**

产品信息

反应	Human,Mouse,Rat
宿主	Rabbit
克隆性	Polyclonal
预测反应	
应用	WB IF/ICC
推荐浓度	WB: 1:500 - 1:2000 IF/ICC: 1:50 - 1:200
理论分子量	22kDa
实测分子量	20kDa
形式	Liquid
保存条件	Store at -20°C. Avoid freeze / thaw cycles. Buffer: PBS with 0.01% thiomersal,50% glycerol,pH7.3.
偶联物	Unconjugated
阳性对照	LO2,293T,HeLa,Mouse brain,Mouse heart,Mouse kidney,Rat brain
细胞定位	Cell membrane,Cytoplasm,Endoplasmic reticulum,Endoplasmic reticulum-Golgi intermediate compartment,Lipid-anchor,Membrane,Nucleus,cytoskeleton
纯化	Affinity purification

抗原信息

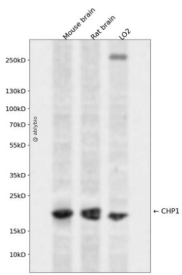
抗原信息	Recombinant fusion protein containing a sequence corresponding to amino acids 1-195 of human CHP1 (NP_009167.1).
序列	MGSRASTLLRDEELEEIKKETGFHSQITRLYSRFTSLDKGENGLSREDFQRIPELAINPLGDRIINAFFPEGEDQVNFGRGFMRTLAHFRPIEDNEKSKDVNGPEPLNSRSNKLHFAFRLYDLDKDEKISRDELLQVLRMMVGVNISDEQLGSIADRTIQEADQDGDSAISFTEFVKVLEKVDVEQKMSIRFLH

靶点信息

研究背景	This gene encodes a phosphoprotein that binds to the Na ⁺ /H ⁺ exchanger NHE1. This protein serves as a n essential cofactor which supports the physiological activity of NHE family members and may play a role in the mitogenic regulation of NHE1. The protein shares similarity with calcineurin B and calmodulin and it is also known to be an endogenous inhibitor of calcineurin activity.
------	---

基因ID	11261
基因名	CHP1
Swiss	Q99653
别名	CHP1;CHP;SLC9A1BP;Sid470p;p22;p24

产品验证



Western blot analysis of CHP1 expressed in Mouse brain,Rat brain,LO2 using CHP1 Rabbit pAb at 1:1000 . Secondary antibody: HRP Goat Anti-Rabbit IgG (H+L) at 1:5000. Lysates/proteins: 30ug per lane. Blocking buffer: 5% non-fat dry milk in TBST. Detection: ECL Enhanced Kit. Exposure time: 120s.

实验步骤

访问官网浏览详情: www.ablybio.cn