

— ABLYBIO, Help Your Research



METAP1 Rabbit pAb

货号: **AYP18217**

产品信息

反应	Mouse,Rat
宿主	Rabbit
克隆性	Polyclonal
预测反应	
应用	WB
推荐浓度	WB: 1:500 - 1:2000
理论分子量	43kDa
实测分子量	48kDa
形式	Liquid
保存条件	Store at -20°C. Avoid freeze / thaw cycles. Buffer: PBS with 0.01% thiomersal,50% glycerol,pH7.3.
偶联物	Unconjugated
阳性对照	Mouse heart,Mouse kidney,Mouse liver,Mouse pancreas,Rat spleen,Rat testis
细胞定位	Cytoplasm
纯化	Affinity purification

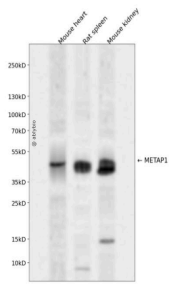
抗原信息

抗原信息	Recombinant fusion protein containing a sequence corresponding to amino acids 177-386 of human METAP1 (NP_055958.2).
------	--

靶点信息

研究背景	Cotranslationally removes the N-terminal methionine from nascent proteins. The N-terminal methionine is often cleaved when the second residue in the primary sequence is small and uncharged (Met-Ala-, Cys, Gly, Pro, Ser, Thr, or Val). Required for normal progression through the cell cycle.
基因ID	23173
基因名	METAP1
Swiss	P53582 (https://www.uniprot.org/uniprotkb/P53582/entry)
别名	METAP1,MAP1A,MetAP1A,METAP1 Rabbit pAb,Peptidase M 1,KIAA0094

产品验证



Western blot analysis of METAP1 expressed in Mouse heart,Rat spleen,Mouse kidney using METAP1 Rabbit pAb at 1:1000. Secondary antibody: HRP Goat Anti-Rabbit IgG (H+L) at 1:5000. Lysates/proteins: 30ug per lane. Blocking buffer: 5% non-fat dry milk in TBST. Detection: ECL Enhanced Kit. Exposure time: 120s.

实验步骤

访问官网浏览详情: www.ablybio.cn (<https://www.ablybio.cn/www.ablybio.cn>)