

COPG2 Rabbit pAb

货号: **AYP18207**

产品信息

反应	Human,Mouse,Rat
宿主	Rabbit
克隆性	Polyclonal
预测反应	
应用	WB IHC IF/ICC
推荐浓度	WB: 1:500 - 1:2000 IHC: 1:50 - 1:100 IF/ICC: 1:50 - 1:100
理论分子量	81kDa/97kDa
实测分子量	105kDa
形式	Liquid
保存条件	Store at -20°C. Avoid freeze / thaw cycles. Buffer: PBS with 0.01% thiomersal,50% glycerol,pH7.3.
偶联物	Unconjugated
阳性对照	Mouse heart,Mouse kidney,Rat heart
细胞定位	COPI-coated vesicle membrane,Cytoplasm,Cytoplasmic side,Cytoplasmic vesicle,Golgi apparatus membrane,Peripheral membrane protein,cytosol
纯化	Affinity purification

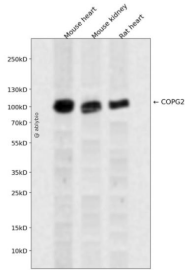
抗原信息

抗原信息	Recombinant fusion protein containing a sequence corresponding to amino acids 542-871 of human COPG2 (NP_036265.3).
序列	LNATYIFNGLTVSVPGMEKALHQYTLPESEKPFDMKSIPLAMAPVFEQKAEITLVATKPEKLAPSRQDIFQEQLAAIPEFLNIG PLFKSSEPVQLTEAETEFVRCIKHMFTNHIVFQFDCTNTLNDQLLEKVTVMPEPSDSYEVLSICIPAPSLPYNQPGICYTLVRL PDDDPTAVAGSFCTMKFTVRDCDPNTGVPDEDEGYDDEYVLEDLEVTVSDHIQKVLKPNFAAAWEEVGDTFEKEETFAL SSTKTLEEAVNNIITFLGMQPCERSDKVPENKNSHSLYLAGIFRGGYDLLVRSRLALADGVTMqvTVRSKERTPVDVILASV G

靶点信息

研究背景	The coatomer is a cytosolic protein complex that binds to dilysine motifs and reversibly associates with Golgi non-clathrin-coated vesicles, which further mediate biosynthetic protein transport from the ER, via the Golgi up to the trans Golgi network. Coatomer complex is required for budding from Golgi membranes, and is essential for the retrograde Golgi-to-ER transport of dilysine-tagged proteins. In mammals, the coatomer can only be recruited by membranes associated to ADP-ribosylation factors (ARFs, which are small GTP-binding proteins); the complex also influences the Golgi structural integrity, as well as the processing, activity, and endocytic recycling of LDL receptors (By similarity).
基因ID	26958
基因名	COPG2
Swiss	Q9UBF2
别名	COPG2;2-COP;gamma-2-COP

产品验证



Western blot analysis of COPG2 expressed in Mouse heart, Mouse kidney, Rat heart using COPG2 Rabbit pAb at 1:1000. Secondary antibody: HRP Goat Anti-Rabbit IgG (H+L) at 1:5000. Lysates/proteins: 30ug per lane. Blocking buffer: 5% non-fat dry milk in TBST. Detection: ECL Enhanced Kit. Exposure time: 12 0s.

实验步骤

访问官网浏览详情: www.ablybio.cn