

PLLP Rabbit pAb

货号: **AYP18193**

产品信息

反应	Mouse,Rat
宿主	Rabbit
克隆性	Polyclonal
预测反应	
应用	WB IF/ICC
推荐浓度	WB: 1:500 - 1:2000 IF/ICC: 1:50 - 1:200
理论分子量	19kDa
实测分子量	20kDa
形式	Liquid
保存条件	Store at -20°C. Avoid freeze / thaw cycles. Buffer: PBS with 0.01% thiomersal,50% glycerol,pH7.3.
偶联物	Unconjugated
阳性对照	Mouse brain,Rat brain,Rat kidney
细胞定位	Membrane,Multi-pass membrane protein
纯化	Affinity purification

抗原信息

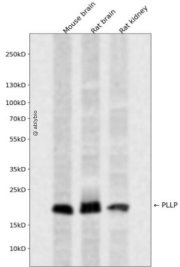
抗原信息	A synthetic peptide corresponding to a sequence within amino acids 1-100 of human PLLP (NP_057077.1)
序列	MAEFPSKVSTRTSSPAQGAEASVSALRPDLGFVRSRLGALMLLQLVLGLLVWALIADTPYHLYPAYGWVMFVAVFLWLVTI VLFNLYLFQLHMKLYMVPW

靶点信息

研究背景	Appears to be involved in myelination. Could also participate in ion transport events as addition of plasmalipin to lipid bilayers induces the formation of ion channels, which are voltage-dependent and K(+)-selective (By similarity).
基因ID	51090

基因名	PLL
Swiss	Q9Y342
别名	PLL;PMLP;TM4SF11

产品验证



Western blot analysis of PLLP expressed in Mouse brain,Rat brain,Rat kidney using PLLP Rabbit pAb at 1:1000. Secondary antibody: HRP Goat Anti-Rabbit IgG (H+L) at 1:5000. Lysates/proteins: 30ug per lane. Blocking buffer: 5% non-fat dry milk in TBST. Detection: ECL Enhanced Kit. Exposure time: 120s.

实验步骤

访问官网浏览详情: www.ablybio.cn