

RPS27L Rabbit pAb

货号: **AYP18192**

产品信息

反应	Human,Mouse,Rat
宿主	Rabbit
克隆性	Polyclonal
预测反应	
应用	WB
推荐浓度	WB: 1:500 - 1:2000
理论分子量	9kDa
实测分子量	12kDa
形式	Liquid
保存条件	Store at -20°C. Avoid freeze / thaw cycles. Buffer: PBS with 0.01% thiomersal,50% glycerol,pH7.3.
偶联物	Unconjugated
阳性对照	293T,HepG2,SH-SY5Y,Mouse liver,Mouse pancreas,Rat heart,Rat liver
细胞定位	nucleus
纯化	Affinity purification

抗原信息

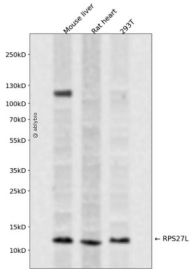
抗原信息	Recombinant fusion protein containing a sequence corresponding to amino acids 1-84 of human RPS27L (NP_057004.1).
序列	MPLARDLLHPSLEEEKHKHKKRLVQSPNSYFMDVKCPGKYKITTVFSHAQTVVLCVGCSTVLCQPTGGKARLTEGCSFRR KQH

靶点信息

研究背景	This gene encodes a protein sharing 96% amino acid similarity with ribosomal protein S27, which suggests the encoded protein may be a component of the 40S ribosomal subunit.
基因ID	51065
基因名	RPS27L

Swiss	Q71UM5
别名	RPS27L

产品验证



Western blot analysis of RPS27L expressed in Mouse liver,Rat heart,293T using RPS27L Rabbit pAb at 1:1000. Secondary antibody: HRP Goat Anti-Rabbit IgG (H+L) at 1:5000. Lysates/proteins: 30ug per lane . Blocking buffer: 5% non-fat dry milk in TBST. Detection: ECL Enhanced Kit. Exposure time: 120s.

实验步骤

访问官网浏览详情: www.ablybio.cn