

UBE2J1 Rabbit pAb

货号: **AYP18186**

产品信息

反应	Human,Mouse,Rat
宿主	Rabbit
克隆性	Polyclonal
预测反应	
应用	WB IF/ICC
推荐浓度	WB: 1:500 - 1:2000 IF/ICC: 1:50 - 1:200
理论分子量	35kDa
实测分子量	35kDa
形式	Liquid
保存条件	Store at -20°C. Avoid freeze / thaw cycles. Buffer: PBS with 0.01% thiomersal,50% glycerol,pH7.3.
偶联物	Unconjugated
阳性对照	Mouse heart,Mouse kidney,Rat lung
细胞定位	Endoplasmic reticulum membrane,Single-pass type IV membrane protein
纯化	Affinity purification

抗原信息

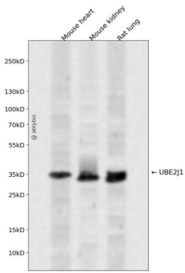
抗原信息	A synthetic peptide corresponding to a sequence within amino acids 1-100 of human UBE2J1 (NP_057105.2).
序列	METRYNLKSPAVKRLMKEAAELKDPTDHYHAQPLEDNLFWEHFTVRGPPDSDFDGGVYHGRIVLPPEYPMKPPSIILLTANGRFEVGGKICLSISGHHPE

靶点信息

研究背景	The modification of proteins with ubiquitin is an important cellular mechanism for targeting abnormal or short-lived proteins for degradation. Ubiquitination involves at least three classes of enzymes: ubiquitin-activating enzymes, or E1s, ubiquitin-conjugating enzymes, or E2s, and ubiquitin-protein ligases, or E3s. This gene encodes a member of the E2 ubiquitin-conjugating enzyme family. This enzyme is located in the membrane of the endoplasmic reticulum (ER) and may contribute to quality control ER-associated degradation by the ubiquitin-proteasome system.
------	--

基因ID	51465
基因名	UBE2J1
Swiss	Q9Y385
别名	UBE2J1;CGI-76;HSPC153;HSPC205;HSU93243;NCUBE-1;NCUBE1;UBC6;UBC6E;Ubc6p

产品验证



Western blot analysis of UBE2J1 expressed in Mouse heart, Mouse kidney, Rat lung using UBE2J1 Rabbit pAb at 1:1000. Secondary antibody: HRP Goat Anti-Rabbit IgG (H+L) at 1:5000. Lysates/proteins: 30ug per lane. Blocking buffer: 5% non-fat dry milk in TBST. Detection: ECL Enhanced Kit. Exposure time: 12 0s.

实验步骤

访问官网浏览详情: www.ablybio.cn