

ELP2 Rabbit pAb

货号: **AYP18170**

产品信息

反应	Mouse,Rat
宿主	Rabbit
克隆性	Polyclonal
预测反应	
应用	WB
推荐浓度	WB: 1:500 - 1:2000
理论分子量	78kDa/84kDa/89kDa/92kDa/99kDa
实测分子量	92kDa
形式	Liquid
保存条件	Store at -20°C. Avoid freeze / thaw cycles. Buffer: PBS with 0.01% thiomersal,50% glycerol,pH7.3.
偶联物	Unconjugated
阳性对照	Mouse brain,Mouse heart,Mouse kidney,Rat spleen
细胞定位	Cytoplasm,Nucleus
纯化	Affinity purification

抗原信息

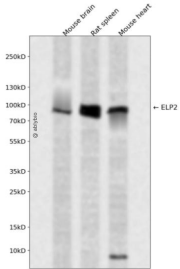
抗原信息	Recombinant fusion protein containing a sequence corresponding to amino acids 300-600 of human ELP2 (NP_001229808.1).
序列	QNTVNPREWTPPEIVISGHFDGVQDLVWDPEGEFIIIVGTDQTRRLFAPWKRKDQSQVTWHEIARPQIHGYDLKCLAMINR FQFVSGADEKVLRFVFSAPRNFVENFCAITGQSLNHVLCNQDSDLPEGATVPALGLSNKAVFQGDIASQPSDEEELLTSTG FEYQQVAFQPSILTEPPTEDHLLQNTLWPEVQKLYGHGYEIFCVTCNSSKTLASACKAAKKEHAAIILWNTTSWKQVQNLV FHSLTVTQMAFSPNEKFLAVSRDRTWSLWKKQDTISPEFEPVFSLFAFTNKITSVHSR

靶点信息

研究背景	The protein encoded by this gene is a core subunit of the elongator complex, a histone acetyltransferase complex that associates with RNA polymerase II. In addition to histone acetylation, the encoded protein effects transcriptional elongation and may help remodel chromatin.
基因ID	55250

基因名	ELP2
Swiss	Q6IA86
别名	ELP2;MRT58;SHINC-2;STATIP1;StIP

产品验证



Western blot analysis of ELP2 expressed in Mouse brain,Rat spleen,Mouse heart using ELP2 Rabbit pAb at 1:1000. Secondary antibody: HRP Goat Anti-Rabbit IgG (H+L) at 1:5000. Lysates/proteins: 30ug per lane. Blocking buffer: 5% non-fat dry milk in TBST. Detection: ECL Enhanced Kit. Exposure time: 120s.

实验步骤

访问官网浏览详情: www.ablybio.cn