

MAP7D1 Rabbit pAb

货号: **AYP18165**

产品信息

反应	Human,Mouse
宿主	Rabbit
克隆性	Polyclonal
预测反应	
应用	WB
推荐浓度	WB: 1:500 - 1:2000
理论分子量	42kDa/88kDa/89kDa/92kDa
实测分子量	110kDa
形式	Liquid
保存条件	Store at -20°C. Avoid freeze / thaw cycles. Buffer: PBS with 0.01% thiomersal,50% glycerol,pH7.3.
偶联物	Unconjugated
阳性对照	LO2,Jurkat,HeLa,Mouse liver
细胞定位	Cytoplasm,cytoskeleton,spindle
纯化	Affinity purification

抗原信息

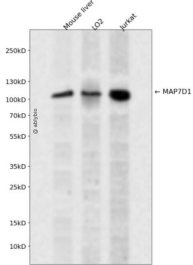
抗原信息	Recombinant fusion protein containing a sequence corresponding to amino acids 200-460 of human MAP 7D1 (NP_060537.3).
序列	QRQKLEKNKERYEAAIQRSVKKTWAEIRQQRWSWAGALHHSSPGHKTSGSRCSVSAVNLPKHVDSIINKRLSKSSATLW NSPSRNRSLQLSAWESSIVDRLMTPTLSFLARSRAVTLPRNGRDQGRGCDPGRGPTWGRAGASLARGPQPDRTHPSA AVPVCPRSASASPLTPCSVTRSVHRCAPAGERGERRKPNAGGSPAPVRRRPEASPVQKKEKKDKERENEKEKSALARERSL KKRQSLPASPRARLSASTASELS

靶点信息

研究背景	Predicted to be involved in microtubule cytoskeleton organization. Located in cytosol and microtubule cytoskeleton.
基因ID	55700

基因名	MAP7D1
Swiss	Q3KQU3
别名	MAP7D1;PARCC1;RPRC1

产品验证



Western blot analysis of MAP7D1 expressed in Mouse liver, LO2, Jurkat using MAP7D1 Rabbit pAb at 1:1000. Secondary antibody: HRP Goat Anti-Rabbit IgG (H+L) at 1:5000. Lysates/proteins: 30ug per lane. Blocking buffer: 5% non-fat dry milk in TBST. Detection: ECL Enhanced Kit. Exposure time: 120s.

实验步骤

访问官网浏览详情: www.ablybio.cn