

# LMBRD1 Rabbit pAb

货号: **AYP18163**

## 产品信息

反应	Human,Mouse
宿主	Rabbit
克隆性	Polyclonal
预测反应	
应用	WB IF/ICC
推荐浓度	<b>WB:</b> 1:500 - 1:2000 <b>IF/ICC:</b> 1:50 - 1:200
理论分子量	21kDa/44kDa/53kDa/61kDa
实测分子量	50kDa
形式	Liquid
保存条件	Store at -20°C. Avoid freeze / thaw cycles. Buffer: PBS with 0.01% thiomersal,50% glycerol,pH7.3.
偶联物	Unconjugated
阳性对照	U-87MG,HeLa,Mouse brain,Mouse lung,Mouse spleen
细胞定位	Lysosome membrane,Multi-pass membrane protein
纯化	Affinity purification

## 抗原信息

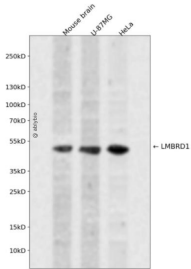
抗原信息	Recombinant fusion protein containing a sequence corresponding to amino acids 220-300 of human LMBRD1 (NP_060838.3).
序列	PLNLIKGTRSAAYERLENTEDIEEVEQHIQTIKSKSKDGRPLPARDKRALKQFEERLRTLKKRERHLEFIENSWWTKFCGA

## 靶点信息

研究背景	This gene encodes a lysosomal membrane protein that may be involved in the transport and metabolism of cobalamin. This protein also interacts with the large form of the hepatitis delta antigen and may be required for the nucleocytoplasmic shuttling of the hepatitis delta virus. Mutations in this gene are associated with the vitamin B12 metabolism disorder termed, homocystinuria-megaloblastic anemia complementation type F.
基因ID	55788

基因名	LMBRD1
Swiss	Q9NUN5
别名	LMBRD1;C6orf209;LMBD1;MAHCF;NESI

## 产品验证



Western blot analysis of LMBRD1 expressed in Mouse brain,U-87MG,HeLa using LMBRD1 Rabbit pAb at 1:1000. Secondary antibody: HRP Goat Anti-Rabbit IgG (H+L) at 1:5000. Lysates/proteins: 30ug per lane. Blocking buffer: 5% non-fat dry milk in TBST. Detection: ECL Enhanced Kit. Exposure time: 120s.

## 实验步骤

访问官网浏览详情: [www.ablybio.cn](http://www.ablybio.cn)