

# MRPS35 Rabbit pAb

货号: **AYP18154**

## 产品信息

反应	Human,Mouse
宿主	Rabbit
克隆性	Polyclonal
预测反应	
应用	WB IHC IF/ICC
推荐浓度	<b>WB:</b> 1:500 - 1:2000 <b>IHC:</b> 1:50 - 1:200 <b>IF/ICC:</b> 1:50 - 1:200
理论分子量	21kDa/36kDa
实测分子量	37kDa
形式	Liquid
保存条件	Store at -20°C. Avoid freeze / thaw cycles. Buffer: PBS with 0.01% thiomersal,50% glycerol,pH7.3.
偶联物	Unconjugated
阳性对照	HT-29,A-549,BxPC-3,A-375,Mouse heart,Mouse kidney,Mouse liver
细胞定位	Mitochondrion
纯化	Affinity purification

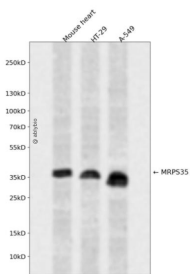
## 抗原信息

抗原信息	Recombinant fusion protein containing a sequence corresponding to amino acids 1-323 of human MRPS35 (NP_068593.2).
序列	MAAAALPAWLSLQSRARTLRAFSTAVYSATPVPTPSLPERTPGNERPPRRKALPPRTEKMAVDQDWPSVYPVAAPFKPSAV PLPVRMGYPVKKGVPMAKEGNLELLKIPNHLTPVAIKKHCEALKDFCTEWPAALDSDEKCEKHFPIEIDSTDYVSSGPSV RNPRARVVVLRVKLSSLNLDDHAKKKLIKLVGERYCKTTDVLTIKTDRCPLRRQNYDYAVYLLTVLYHESWNTEEWEKSKTE ADMEEYIWENSSSERNILETLLQMKA AEKNMEINKEELLGTKEIEEYKKS VVSLKNEEENENSISQYKESVKRLNVT

## 靶点信息

研究背景	Mammalian mitochondrial ribosomal proteins are encoded by nuclear genes and help in protein synthesis within the mitochondrion. Mitochondrial ribosomes (mitoribosomes) consist of a small 28S subunit and a large 39S subunit. They have an estimated 75% protein to rRNA composition compared to prokaryotic ribosomes, where this ratio is reversed. Another difference between mammalian mitoribosomes and prokaryotic ribosomes is that the latter contain a 5S rRNA. Among different species, the proteins comprising the mitoribosome differ greatly in sequence, and sometimes in biochemical properties, which prevents easy recognition by sequence homology. This gene encodes a 28S subunit protein that has had confusing nomenclature in the literature. Alternatively spliced transcript variants encoding different isoforms have been found for this gene. Pseudogenes corresponding to this gene are found on chromosomes 3p, 5q, and 10q.
基因ID	60488
基因名	MRPS35
Swiss	P82673
别名	MRPS35;HDCMD11P;MDS023;MRP-S28;MRPS28

## 产品验证



Western blot analysis of MRPS35 expressed in Mouse heart, HT-29, A-549 using MRPS35 Rabbit pAb at 1:1000. Secondary antibody: HRP Goat Anti-Rabbit IgG (H+L) at 1:5000. Lysates/proteins: 30ug per lane. Blocking buffer: 5% non-fat dry milk in TBST. Detection: ECL Enhanced Kit. Exposure time: 120s.

## 实验步骤

访问官网浏览详情: [www.ablybio.cn](http://www.ablybio.cn)