

KIF13A Rabbit pAb

货号: **AYP18153**

产品信息

反应	Human,Mouse
宿主	Rabbit
克隆性	Polyclonal
预测反应	
应用	WB IF/ICC
推荐浓度	WB: 1:500 - 1:2000 IF/ICC: 1:50 - 1:200
理论分子量	7kDa/196kDa/197kDa/198kDa/202kDa
实测分子量	250kDa
形式	Liquid
保存条件	Store at -20°C. Avoid freeze / thaw cycles. Buffer: PBS with 0.01% thiomersal,50% glycerol,pH7.3.
偶联物	Unconjugated
阳性对照	LO2
细胞定位	Cytoplasm,Endosome membrane,Golgi apparatus membrane,Midbody,centrosome,cytoskeleton,microtubule organizing center
纯化	Affinity purification

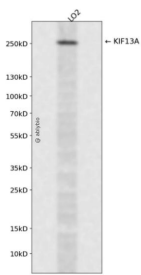
抗原信息

抗原信息	Recombinant fusion protein containing a sequence corresponding to amino acids 1300-1600 of human KIF13A (NP_001099036.1).
序列	SCGVTYEIVSNIPKATEEIEDRETLALLAARSENEGTS DGETYIEKYTRGVLQVENILSLERLRQAVTVKEALSTKARHIRRSLSTPNVHNVSSSRPDLSGFDEDDKGWPENQLDMSDYSSSYQDVACYGTLPRDSPRRNKEGCTSETPHALTVSPFKAFSPQPPKFFKPLMPVKEEHKKRIALEARPLLSQEDSEEEENELEAINRKLIS SQPYVPVEFADF SVYNASLENREWFSSKVDLSNSRVLEKEVSRSPPTSSITSGYFHSASNATLSDMVVPSDSSDQLAIQTKDADSTEH

靶点信息

研究背景	This gene encodes a member of the kinesin family of microtubule-based motor proteins that function in the positioning of endosomes. This family member can direct mannose-6-phosphate receptor-containing vesicles from the trans-Golgi network to the plasma membrane, and it is necessary for the steady-state distribution of late endosomes/lysosomes. It is also required for the translocation of FYVE-CENT and TTC19 from the centrosome to the midbody during cytokinesis, and it plays a role in melanosome maturation. Alternative splicing of this gene results in multiple transcript variants.
基因ID	63971
基因名	KIF13A
Swiss	Q9H1H9
别名	KIF13A;RBKIN;bA500C11.2

产品验证



Western blot analysis of KIF13A expressed in LO2 using KIF13A Rabbit pAb at 1:1000. Secondary antibody : HRP Goat Anti-Rabbit IgG (H+L) at 1:5000. Lysates/proteins: 30ug per lane. Blocking buffer: 5% non-fat dry milk in TBST. Detection: ECL Enhanced Kit. Exposure time: 120s.

实验步骤

访问官网浏览详情: www.ablybio.cn