

VPS16 Rabbit pAb

货号: **AYP18148**

产品信息

反应	Human,Mouse,Rat
宿主	Rabbit
克隆性	Polyclonal
预测反应	
应用	WB
推荐浓度	WB: 1:500 - 1:2000
理论分子量	78kDa/94kDa
实测分子量	95kDa
形式	Liquid
保存条件	Store at -20°C. Avoid freeze / thaw cycles. Buffer: PBS with 0.01% thiomersal,50% glycerol,pH7.3.
偶联物	Unconjugated
阳性对照	A-549,Mouse brain,Mouse lung,Rat pancreas
细胞定位	Cytoplasmic side,Cytoplasmic vesicle,Early endosome,Late endosome membrane,Lysosome membrane,Peripheral membrane protein,autophagosome,clathrin-coated vesicle
纯化	Affinity purification

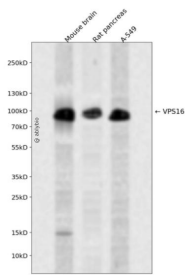
抗原信息

抗原信息	Recombinant fusion protein containing a sequence corresponding to amino acids 540-839 of human VPS16 (NP_072097.2).
序列	EYEPRSGEQVPLLLKMKRSLALSKAIESGDTDLVFTVLLHLKNELNRGDFFMTRLRNQPMALSRYRQFCKHQELETLDLYNQDDNHQELGSFHIRASYAAEERIEGRVAALQTAADAFYKAKNEFAAKATEDQMRLRLQRRLEDELGGQFLDLSLHDTVTLILGGHNKRAEQLARDFRIPDKRLWWLKLALADLEDWEELEKFSKSKSPIGYLPFVEICMKQHKNKYEAKKYASRVGPEQKVKALLLVGDVAQAADVAIEHRNEAELSLVLSHCTGATDGATADKIQRARAQAQKK

靶点信息

研究背景	Vesicle mediated protein sorting plays an important role in segregation of intracellular molecules into distinct organelles. Genetic studies in yeast have identified more than 40 vacuolar protein sorting (VPS) genes involved in vesicle transport to vacuoles. This gene encodes the human homolog of yeast class C Vps16 protein. The mammalian class C Vps proteins are predominantly associated with late endosomes/lysosomes, and like their yeast counterparts, may mediate vesicle trafficking steps in the endosome/lysosome pathway. Two transcript variants encoding different isoforms have been found for this gene.
基因ID	64601
基因名	VPS16
Swiss	Q9H269
别名	VPS16;hVPS16

产品验证



Western blot analysis of VPS16 expressed in Mouse brain, Rat pancreas, A-549 using VPS16 Rabbit pAb at 1:1000. Secondary antibody: HRP Goat Anti-Rabbit IgG (H+L) at 1:5000. Lysates/proteins: 30ug per lane. Blocking buffer: 5% non-fat dry milk in TBST. Detection: ECL Enhanced Kit. Exposure time: 120s.

实验步骤

访问官网浏览详情: www.ablybio.cn