

MMP25 Rabbit pAb

货号: **AYP18146**

产品信息

反应	Human,Mouse,Rat
宿主	Rabbit
克隆性	Polyclonal
预测反应	
应用	WB IHC IF/ICC
推荐浓度	WB: 1:500 - 1:2000 IHC: 1:50 - 1:200 IF/ICC: 1:50 - 1:200
理论分子量	62kDa
实测分子量	75kDa
形式	Liquid
保存条件	Store at -20°C. Avoid freeze / thaw cycles. Buffer: PBS with 0.01% thiomersal,50% glycerol,pH7.3.
偶联物	Unconjugated
阳性对照	A-549,HT-29,Mouse lung,Mouse liver,Rat liver
细胞定位	Cell membrane,Extracellular side,GPI-anchor,Lipid-anchor,Secreted,extracellular matrix,extracellular space
纯化	Affinity purification

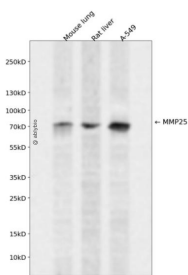
抗原信息

抗原信息	Recombinant fusion protein containing a sequence corresponding to amino acids 321-539 of human MMP 25 (NP_071913.1).
序列	FDAIANIRGETFFFKGPWFWR LQPSGQLVSPRPARLHRFWEGLPAQVRVVQAAYARHRDGRILLFSGPQFWVFQDRQLE GGARPLTELGLPPGEEVDVAFSWPQNGKTYLVRGRQYWRYDEAAARPDPGYPRDLSLWEGAPPSPDDVTVSNAGDTYF FKGAHYWRFPKNSIKTEPDAPQPMGPNWLD CPAPSSGPRAPRPPKATPVSETCDCQCELNQA

靶点信息

研究背景	Proteins of the matrix metalloproteinase (MMP) family are involved in the breakdown of extracellular matrix in normal physiological processes, such as embryonic development, reproduction, and tissue remodeling, as well as in disease processes, such as arthritis and metastasis. Most MMPs are secreted as inactive proproteins which are activated when cleaved by extracellular proteinases. However, the protein encoded by this gene is a member of the membrane-type MMP (MT-MMP) subfamily, attached to the plasma membrane via a glycosylphosphatidylinositol anchor. In response to bacterial infection or inflammation, the encoded protein is thought to inactivate alpha-1 proteinase inhibitor, a major tissue protectant against proteolytic enzymes released by activated neutrophils, facilitating the transendothelial migration of neutrophils to inflammatory sites. The encoded protein may also play a role in tumor invasion and metastasis through activation of MMP2. The gene has previously been referred to as MMP20 but has been renamed MMP25.
基因ID	64386
基因名	MMP25
Swiss	Q9NPA2
别名	MMP25;MMP-25;MMP20;MMP20A;MMPL1;MT-MMP 6;MT-MMP6;MT6-MMP;MT6MMP;MTMMP6

产品验证



Western blot analysis of MMP25 expressed in Mouse lung, Rat liver, A-549 using MMP25 Rabbit pAb at 1:1000. Secondary antibody: HRP Goat Anti-Rabbit IgG (H+L) at 1:5000. Lysates/proteins: 30ug per lane. Blocking buffer: 5% non-fat dry milk in TBST. Detection: ECL Enhanced Kit. Exposure time: 120s.

实验步骤

访问官网浏览详情: www.ablybio.cn