

PLA2G12A Rabbit pAb

货号: **AYP18135**

产品信息

反应	Human,Mouse
宿主	Rabbit
克隆性	Polyclonal
预测反应	
应用	WB
推荐浓度	WB: 1:500 - 1:2000
理论分子量	21kDa
实测分子量	17kDa
形式	Liquid
保存条件	Store at -20°C. Avoid freeze / thaw cycles. Buffer: PBS with 0.01% thiomersal,50% glycerol,pH7.3.
偶联物	Unconjugated
阳性对照	HepG2,HeLa,Mouse pancreas
细胞定位	Cytoplasm,Secreted
纯化	Affinity purification

抗原信息

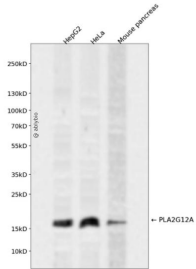
抗原信息	A synthetic peptide corresponding to a sequence within amino acids 1-100 of human PLA2G12A (NP_110448.2).
序列	MALLSRPALTL LLLLMAAVVRCQEQAQT TDWRATLKTIRNGVHKIDTYLNAALDLLGGEDGLCQYKCS DGSKPFP RYGYKP SPPNGCGSPLFGVHLNIGI

靶点信息

研究背景	Secreted phospholipase A2 (sPLA2) enzymes liberate arachidonic acid from phospholipids for production of eicosanoids and exert a variety of physiologic and pathologic effects. Group XII sPLA2s, such as PLA2G12A, have relatively low specific activity and are structurally and functionally distinct from other sPLA2s (Gelb et al., 2000 [PubMed 11031251]).
基因ID	81579

基因名	PLA2G12A
Swiss	Q9BZM1
别名	PLA2G12A;GXII;PLA2G12;ROSSY

产品验证



Western blot analysis of PLA2G12A expressed in HepG2, HeLa, Mouse pancreas using PLA2G12A Rabbit pAb at 1:1000. Secondary antibody: HRP Goat Anti-Rabbit IgG (H+L) at 1:5000. Lysates/proteins: 30ug per lane. Blocking buffer: 5% non-fat dry milk in TBST. Detection: ECL Enhanced Kit. Exposure time: 12 0s.

实验步骤

访问官网浏览详情: www.ablybio.cn