

ADD1 Rabbit pAb

货号: **AYP18126**

产品信息

反应	Human,Mouse
宿主	Rabbit
克隆性	Polyclonal
预测反应	
应用	WB
推荐浓度	WB: 1:500 - 1:2000
理论分子量	56kDa/69kDa/73kDa/80kDa/84kDa
实测分子量	73kDa
形式	Liquid
保存条件	Store at -20°C. Avoid freeze / thaw cycles. Buffer: PBS with 0.02% sodium azide,50% glycerol,pH7.3.
偶联物	Unconjugated
阳性对照	BT-474,Mouse brain
细胞定位	Cell membrane,Cytoplasm,Cytoplasmic side,Peripheral membrane protein,cytoskeleton
纯化	Affinity purification

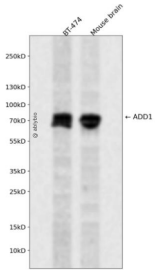
抗原信息

抗原信息	Recombinant fusion protein containing a sequence corresponding to amino acids 60-300 of human ADD1 (NP_054908.2).
序列	MILQSPAFCEELESMIQEQFKKGKNPTGLLALQQIADFMTTNVNPVYPAAPQGGMAALNMSLGMVTPVNDLRGSDSIAYD KGEKLLRCKLAIFYRLADLFGWSQLIYNHITTRVNSEQEHFLIVPFGLLYSEVTASSLVKINLQGDIVDRGSTNLGVNQAGFT LHSAIYAARPDVKCVVHIHTPAGAAVSAMKCGLLPISPEALSLGEVAYHDYHGILVDEEEKVLIQKNLGPKSKVLILR

靶点信息

研究背景	Adducins are a family of cytoskeleton proteins encoded by three genes (alpha, beta, gamma). Adducin is a heterodimeric protein that consists of related subunits, which are produced from distinct genes but share a similar structure. Alpha- and beta-adducin include a protease-resistant N-terminal region and a protease-sensitive, hydrophilic C-terminal region. Alpha- and gamma-adducins are ubiquitously expressed. In contrast, beta-adducin is expressed at high levels in brain and hematopoietic tissues. Adducin binds with high affinity to Ca(2+)/calmodulin and is a substrate for protein kinases A and C. Alternative splicing results in multiple variants encoding distinct isoforms; however, not all variants have been fully described.
基因ID	118
基因名	ADD1
Swiss	P35611
别名	ADD1;ADDA;adducin 1

产品验证



Western blot analysis of ADD1 expressed in BT-474, Mouse brain using ADD1 Rabbit pAb at 1:1000. Secondary antibody: HRP Goat Anti-Rabbit IgG (H+L) at 1:5000. Lysates/proteins: 30ug per lane. Blocking buffer: 5% non-fat dry milk in TBST. Detection: ECL Enhanced Kit. Exposure time: 120s.

实验步骤

访问官网浏览详情: www.ablybio.cn