

ATPAF2 Rabbit pAb

货号: **AYP18120**

产品信息

反应	Mouse
宿主	Rabbit
克隆性	Polyclonal
预测反应	
应用	WB
推荐浓度	WB: 1:500 - 1:2000
理论分子量	32kDa
实测分子量	38kDa
形式	Liquid
保存条件	Store at -20°C. Avoid freeze / thaw cycles. Buffer: PBS with 0.01% thiomersal, 50% glycerol, pH7.3.
偶联物	Unconjugated
阳性对照	Mouse heart, Mouse kidney, Mouse liver
细胞定位	Mitochondrion
纯化	Affinity purification

抗原信息

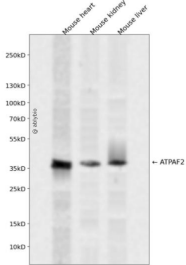
抗原信息	Recombinant fusion protein containing a sequence corresponding to amino acids 41-200 of human ATPAF 2 (NP_663729.1).
序列	APPTERKRFYQNVISITQGEGGFEINLDHRKCLKTPQAKLFTVPSEALAIIVATEWDSQQDTIKYYTMHLTLCNTSLDNPTQR NKDQLIRA AVKFLD TDTIC YRVEEPETLV ELQRNEWDPII EWAEKRYGVEISSSTSIMGPSIPAKTREV LVSHLASYN

靶点信息

研究背景	This gene encodes an assembly factor for the F(1) component of the mitochondrial ATP synthase. This protein binds specifically to the F1 alpha subunit and is thought to prevent this subunit from forming nonproductive homooligomers during enzyme assembly. This gene is located within the Smith-Magenis syndrome region on chromosome 17. An alternatively spliced transcript variant has been described, but its biological validity has not been determined.
基因ID	91647

基因名	ATPAF2
Swiss	Q8N5M1
别名	ATPAF2;ATP12;ATP12p;LP3663;MC5DN1

产品验证



Western blot analysis of ATPAF2 expressed in Mouse heart, Mouse kidney, Mouse liver using ATPAF2 Rabbit pAb at 1:1000. Secondary antibody: HRP Goat Anti-Rabbit IgG (H+L) at 1:5000. Lysates/proteins: 30 ug per lane. Blocking buffer: 5% non-fat dry milk in TBST. Detection: ECL Enhanced Kit. Exposure time: 120s.

实验步骤

访问官网浏览详情: www.ablybio.cn