

AZIN2 Rabbit pAb

货号: **AYP18111**

产品信息

反应	Mouse,Rat
宿主	Rabbit
克隆性	Polyclonal
预测反应	
应用	WB
推荐浓度	WB: 1:500 - 1:2000
理论分子量	22kDa/39kDa/40kDa/49kDa/51kDa
实测分子量	50kDa
形式	Liquid
保存条件	Store at -20°C. Avoid freeze / thaw cycles. Buffer: PBS with 0.01% thiomersal,50% glycerol,pH7.3.
偶联物	Unconjugated
阳性对照	Mouse pancreas,Rat pancreas
细胞定位	Cell projection,Cytoplasm,Cytoplasmic granule,Cytoplasmic vesicle,Endoplasmic reticulum-Golgi intermediate compartment,Golgi apparatus,Membrane,Nucleus,Perikaryon,axon,cis-Golgi network,dendrite,perinuclear region,trans-Golgi network
纯化	Affinity purification

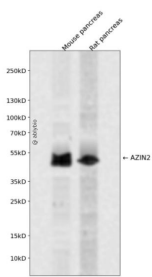
抗原信息

抗原信息	Recombinant fusion protein containing a sequence corresponding to amino acids 1-360 of human AZIN2 (NP_443724.1).
序列	MAGYLSEDFVMVEEGFSTRDLLKELTLGASQATTDEVAFFVADLGAIVRKHFCKLCLPRVRPFYAVKCNSSPGVLKVL AQLGLGFSCANKAEMELVQHIGIPASKIICANPCKQIAQIKYAAKHGIQLLSFDNEMELAKVVKSHPSAKMVLCIATDDSHSL SCLSLKFGVSLKSCRHLLENAKKHHVEVVGVSFHIGSGCPDPQAYAQSIADARLVFEMGTELGHKMHVLDLGGGFPGTE GAKVRFEIASVINSALDLYFPEGCGVDIFAELGRYYVTSFTVAVSIIAKKEVLLDQPGREEENGSTSKTIVYHLDEGVYIGIF NSVLFDNICPTPILQKKPSTEQPLYSSSLWGPA

靶点信息

研究背景	The protein encoded by this gene belongs to the antizyme inhibitor family, which plays a role in cell growth and proliferation by maintaining polyamine homeostasis within the cell. Antizyme inhibitors are homologs of ornithine decarboxylase (ODC, the key enzyme in polyamine biosynthesis) that have lost the ability to decarboxylate ornithine; however, retain the ability to bind to antizymes. Antizymes negatively regulate intracellular polyamine levels by binding to ODC and targeting it for degradation, as well as by inhibiting polyamine uptake. Antizyme inhibitors function as positive regulators of polyamine levels by sequestering antizymes and neutralizing their effect. This gene encodes antizyme inhibitor 2, the second member of this gene family. Like antizyme inhibitor 1, antizyme inhibitor 2 interacts with all 3 antizymes and stimulates ODC activity and polyamine uptake. However, unlike antizyme inhibitor 1, which is ubiquitously expressed and localized in the nucleus and cytoplasm, antizyme inhibitor 2 is predominantly expressed in the brain and testis and localized in the endoplasmic reticulum-golgi intermediate compartment. Recent studies indicate that antizyme inhibitor 2 is also expressed in specific cell types in ovaries, adrenal glands and pancreas, and in mast cells. The exact function of this gene is not known, however, available data suggest its role in cell growth, spermiogenesis, vesicular trafficking and secretion.
基因ID	113451
基因名	AZIN2
Swiss	Q96A70
别名	AZIN2;ADC;AZI2;AZIB1;ODC-p;ODC1L;ODCp

产品验证



Western blot analysis of AZIN2 expressed in Mouse pancreas, Rat pancreas using AZIN2 Rabbit pAb at 1:1000. Secondary antibody: HRP Goat Anti-Rabbit IgG (H+L) at 1:5000. Lysates/proteins: 30ug per lane. Blocking buffer: 5% non-fat dry milk in TBST. Detection: ECL Enhanced Kit. Exposure time: 120s.

实验步骤

访问官网浏览详情: www.ablybio.cn