

CHCHD1 Rabbit pAb

货号: **AYP18107**

产品信息

反应	Human,Mouse
宿主	Rabbit
克隆性	Polyclonal
预测反应	
应用	WB
推荐浓度	WB: 1:500 - 1:2000
理论分子量	13kDa
实测分子量	13kDa
形式	Liquid
保存条件	Store at -20°C. Avoid freeze / thaw cycles. Buffer: PBS with 0.01% thiomersal,50% glycerol,pH7.3.
偶联物	Unconjugated
阳性对照	293T,Mouse liver
细胞定位	Mitochondrion,Nucleus
纯化	Affinity purification

抗原信息

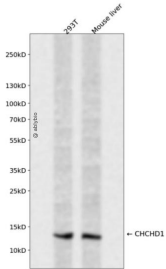
抗原信息	Recombinant fusion protein containing a sequence corresponding to amino acids 1-118 of human CHCHD 1 (NP_976043.1).
序列	MATPSLRGRLARFGNPRKPVLPKPNKPLILANRVGERRREKGEATCITEMSVMMACWKQNEFRDDACRKEIQGFLDCAARA QEARKMRSIQETLGESGSLLPNKLNLKLLQRFPNKPYS

靶点信息

研究背景	Enables RNA binding activity. Predicted to be involved in mitochondrial translation. Located in cytosol; mitochondrion; and nuclear lumen.
基因ID	118487
基因名	CHCHD1

Swiss	Q96BP2
别名	CHCHD1;C10orf34;C2360;MRP-S37

产品验证



Western blot analysis of CHCHD1 expressed in 293T, Mouse liver using CHCHD1 Rabbit pAb at 1:1000. Secondary antibody: HRP Goat Anti-Rabbit IgG (H+L) at 1:5000. Lysates/proteins: 30ug per lane. Blocking buffer: 5% non-fat dry milk in TBST. Detection: ECL Enhanced Kit. Exposure time: 120s.

实验步骤

访问官网浏览详情: www.ablybio.cn