

ERP27 Rabbit pAb

货号: **AYP18106**

产品信息

反应	Mouse,Rat
宿主	Rabbit
克隆性	Polyclonal
预测反应	
应用	WB
推荐浓度	WB: 1:500 - 1:2000
理论分子量	30kDa
实测分子量	35kDa
形式	Liquid
保存条件	Store at -20°C. Avoid freeze / thaw cycles. Buffer: PBS with 0.01% thiomersal,50% glycerol,pH7.3.
偶联物	Unconjugated
阳性对照	Mouse pancreas,Mouse spleen,Rat lung
细胞定位	Endoplasmic reticulum lumen
纯化	Affinity purification

抗原信息

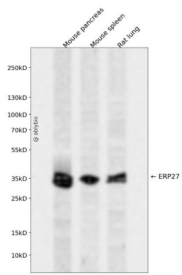
抗原信息	Recombinant fusion protein containing a sequence corresponding to amino acids 1-273 of human ERP27 (NP_689534.1).
序列	MEAAPSRFMFLFLLTCELAEEVAEEVEKSSDGPAAQEPTWLTDVPAAMEFIAATEVAVIGFFQDLEIPAVPILHSMVQKFP PGVSFGISTDSEVLTHYNITGNTICLFRLDVNEQLNLEDEDIESIDATKLSRFIEINSLHVMTEYNPVTVIGLFNSVIQIHLLIM NKASPEYEENMHRYQKAAKLFQGGKILFILVDSGMKENGKVISFFKLKESQLPALAIYQTLDDDEWDTLPTAEVSVEHVQNFC DGFLSGKLLKENRESEGKTPKVEL

靶点信息

研究背景	This gene encodes a noncatalytic member of the protein disulfide isomerase (PDI) family of endoplasmic reticulum (ER) proteins. The canonical protein has an N-terminal signal sequence, two thioredoxin (TRX)-like domains and a C-terminal ER-retention sequence. Alternative splicing results in multiple transcript variants encoding distinct isoforms; some of which lack domains present in the canonical protein.
------	---

基因ID	121506
基因名	ERP27
Swiss	Q96DN0
别名	ERP27;C12orf46;PDIA8

产品验证



Western blot analysis of ERP27 expressed in Mouse pancreas, Mouse spleen, Rat lung using ERP27 Rabbit pAb at 1:1000. Secondary antibody: HRP Goat Anti-Rabbit IgG (H+L) at 1:5000. Lysates/proteins: 30ug per lane. Blocking buffer: 5% non-fat dry milk in TBST. Detection: ECL Enhanced Kit. Exposure time: 120 S.

实验步骤

访问官网浏览详情: www.ablybio.cn