

NAXE Rabbit pAb

货号: **AYP18094**

产品信息

反应	Human,Mouse,Rat
宿主	Rabbit
克隆性	Polyclonal
预测反应	
应用	WB
推荐浓度	WB: 1:500 - 1:2000
理论分子量	20kDa/31kDa
实测分子量	32kDa
形式	Liquid
保存条件	Store at -20°C. Avoid freeze / thaw cycles. Buffer: PBS with 0.01% thiomersal,50% glycerol,pH7.3.
偶联物	Unconjugated
阳性对照	293T,LO2,NIH/3T3,Rat lung
细胞定位	Mitochondrion,Secreted
纯化	Affinity purification

抗原信息

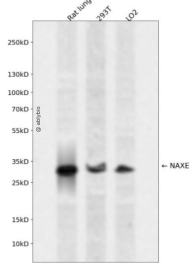
抗原信息	Recombinant fusion protein containing a sequence corresponding to amino acids 48-170 of human NAXE (NP_658985.2).
序列	DSEVMASVVVKYLSQEEAQAVDQELFNEYQFSVDQLMELAGLSCATAIAKAYPPTSMRSRSPPTVLVICGPGNNGDGLVC ARHLKLFGEPTIYYPKRPNKPLFTALVTQCQKMDIPFLGEMP

靶点信息

研究背景	The product of this gene interacts with apolipoprotein A-I (apoA-I), the major apolipoprotein of high-density lipoproteins (HDLs). It is secreted into some bodily fluids, and its synthesis and secretion are stimulated in vitro by incubating cells with apoA-I. The human genome contains related pseudogenes.
基因ID	128240

基因名	NAXE
Swiss	Q8NCW5
别名	NAXE;AIBP;APOA1BP;PEBEL;YJEFN1

产品验证



Western blot analysis of NAXE expressed in Rat lung,293T,LO2 using NAXE Rabbit pAb at 1:1000. Secondary antibody: HRP Goat Anti-Rabbit IgG (H+L) at 1:5000. Lysates/proteins: 30ug per lane. Blocking buffer: 5% non-fat dry milk in TBST. Detection: ECL Enhanced Kit. Exposure time: 120s.

实验步骤

访问官网浏览详情: www.ablybio.cn