

NSMCE1 Rabbit pAb

货号: **AYP18084**

产品信息

反应	Human,Rat
宿主	Rabbit
克隆性	Polyclonal
预测反应	
应用	WB
推荐浓度	WB: 1:500 - 1:2000
理论分子量	30kDa
实测分子量	31kDa
形式	Liquid
保存条件	Store at -20°C. Avoid freeze / thaw cycles. Buffer: PBS with 0.01% thiomersal,50% glycerol,pH7.3.
偶联物	Unconjugated
阳性对照	BxPC-3,Rat testis
细胞定位	Chromosome,Nucleus,telomere
纯化	Affinity purification

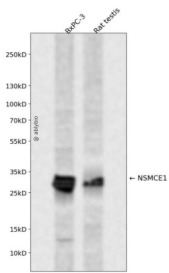
抗原信息

抗原信息	Recombinant fusion protein containing a sequence corresponding to amino acids 7-266 of human NSMCE 1 (NP_659547.2).
序列	RMGVMTDVHRRFLQLMTHGVLEEDVVKRLQTHCYKVHDRNATVDKLEDFINNINSVLESYIEIKRGVTEDDGRPIYALV NLATTSISKMATDFAENELDLFRKALELIIDSETGFASSTNILNLVDQLKGGKMRKKEAEQVLQKFVQNKWLIEKEGEFTLH GRAILEMEQYIREYTPDAVKICNICHSLLIQGQSCETCGIRMHLPCVAKYFQSNAPRCPCNDYWPHEIPKVFDPKERESG VLKSNKKSLRSRQH

靶点信息

研究背景	RING-type zinc finger-containing E3 ubiquitin ligase that assembles with melanoma antigen protein (MAGE E to catalyze the direct transfer of ubiquitin from E2 ubiquitin-conjugating enzyme to a specific substrate. Within MAGE-RING ubiquitin ligase complex, MAGE stimulates and specifies ubiquitin ligase activity likely through recruitment and/or stabilization of the E2 ubiquitin-conjugating enzyme at the E3:substrate complex. Involved in maintenance of genome integrity, DNA damage response and DNA repair. NSMCE3/MAGE G1 and NSMCE1 ubiquitin ligase are components of SMC5-SMC6 complex and may positively regulate homologous recombination-mediated DNA repair. MAGEF1-NSMCE1 ubiquitin ligase promotes proteasomal degradation of MMS19, a key component of the cytosolic iron-sulfur protein assembly (CIA machinery. Down-regulation of MMS19 impairs the activity of several DNA repair and metabolism enzymes such as ERCC2/XPD, FANCD1, RTEL1 and POLD1 that require iron-sulfur clusters as cofactors.
基因ID	197370
基因名	NSMCE1
Swiss	Q8WV22
别名	NSMCE1;NSE1;NSE1 homolog

产品验证



Western blot analysis of NSMCE1 expressed in BxPC-3, Rat testis using NSMCE1 Rabbit pAb at 1:1000. Secondary antibody: HRP Goat Anti-Rabbit IgG (H+L) at 1:5000. Lysates/proteins: 30ug per lane. Blocking buffer: 5% non-fat dry milk in TBST. Detection: ECL Enhanced Kit. Exposure time: 120s.

实验步骤

访问官网浏览详情: www.ablybio.cn