

EBF3 Rabbit pAb

货号: **AYP18083**

产品信息

反应	Human
宿主	Rabbit
克隆性	Polyclonal
预测反应	
应用	WB
推荐浓度	WB: 1:500 - 1:2000
理论分子量	60kDa/64kDa
实测分子量	60KDa
形式	Liquid
保存条件	Store at -20°C. Avoid freeze / thaw cycles. Buffer: PBS with 0.01% thiomersal,50% glycerol,pH7.3.
偶联物	Unconjugated
阳性对照	Rat thymus
细胞定位	Nucleus
纯化	Affinity purification

抗原信息

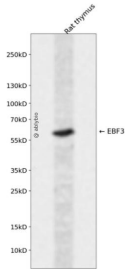
抗原信息	A synthetic peptide corresponding to a sequence within amino acids 400-500 of human EBF3 (NP_001005463.1).
序列	AEALYSVPRNHNQIPTLGNNPAHTGMMGVNSFSSQLAVNVSETSQANDQVGYSRNTSSVSPRGYVPSSTPQQSNYNTV STSMNGYGSGAMASLGVPSPGF

靶点信息

研究背景	This gene encodes a member of the early B-cell factor (EBF) family of DNA binding transcription factors. EBF proteins are involved in B-cell differentiation, bone development and neurogenesis, and may also function as tumor suppressors. The encoded protein inhibits cell survival through the regulation of genes involved in cell cycle arrest and apoptosis, and aberrant methylation or deletion of this gene may play a role in multiple malignancies including glioblastoma multiforme and gastric carcinoma.
基因ID	253738

基因名	EBF3
Swiss	Q9H4W6
别名	EBF3;COE3;EBF-3;HADDS;O/E-2;OE-2

产品验证



Western blot analysis of EBF3 expressed in Rat thymus using EBF3 Rabbit pAb at 1:1000. Secondary antibody: HRP Goat Anti-Rabbit IgG (H+L) at 1:5000. Lysates/proteins: 30ug per lane. Blocking buffer: 5% non-fat dry milk in TBST. Detection: ECL Enhanced Kit. Exposure time: 120s.

实验步骤

访问官网浏览详情: www.ablybio.cn