

RFPL4 Rabbit pAb

货号: **AYP18075**

产品信息

反应	Human,Mouse,Rat
宿主	Rabbit
克隆性	Polyclonal
预测反应	
应用	WB
推荐浓度	WB: 1:500 - 1:2000
理论分子量	32kDa
实测分子量	32kDa
形式	Liquid
保存条件	Store at -20°C. Avoid freeze / thaw cycles. Buffer: PBS with 0.01% thiomersal,50% glycerol,pH7.3.
偶联物	Unconjugated
阳性对照	HeLa,Mouse testis,Rat testis
细胞定位	cytoplasm,nucleoplasm
纯化	Affinity purification

抗原信息

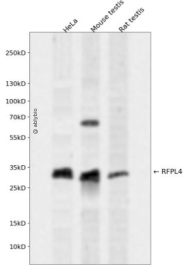
抗原信息	A synthetic peptide corresponding to a sequence within amino acids 1-100 of human RFPL4 (NP_001138486.1).
序列	MAEHFKQIIRCPVCLKDLEEAVQLKCGYACCLQCLNSLQKEPDGEGLLCRFCSVVSQKDDIKPKYKLRALVSIKELEPKLKS VLTMNPRMRKFQVDMTF

靶点信息

研究背景	Predicted to enable ubiquitin-protein transferase activity. Predicted to be involved in positive regulation of transcription, DNA-templated. Predicted to be located in nucleus. Predicted to be active in chromatin and nucleoplasm.
基因ID	342931

基因名	RFPL4A
Swiss	A6NLU0
别名	RFPL4A;RFPL4;RNF210

产品验证



Western blot analysis of RFPL4 expressed in HeLa, Mouse testis, Rat testis using RFPL4 Rabbit pAb at 1:1000. Secondary antibody: HRP Goat Anti-Rabbit IgG (H+L) at 1:5000. Lysates/proteins: 30ug per lane. Blocking buffer: 5% non-fat dry milk in TBST. Detection: ECL Enhanced Kit. Exposure time: 120s.

实验步骤

访问官网浏览详情: www.ablybio.cn