

GLS2 Rabbit pAb

货号: **AYP18060**

产品信息

反应	Human,Mouse,Rat
宿主	Rabbit
克隆性	Polyclonal
预测反应	
应用	WB IF/ICC
推荐浓度	WB: 1:500 - 1:1000 IF/ICC: 1:50 - 1:200
理论分子量	23kDa/66kDa
实测分子量	66KDa
形式	Liquid
保存条件	Store at -20°C. Avoid freeze / thaw cycles. Buffer: PBS with 0.05% proclin300,50% glycerol,pH7.3.
偶联物	Unconjugated
阳性对照	Mouse kidney,Rat kidney
细胞定位	Mitochondrion
纯化	Affinity purification

抗原信息

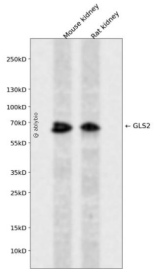
抗原信息	A synthetic peptide corresponding to a sequence within amino acids 500-602 of human GLS2 (NP_037399.2).
序列	SALRRFALSAMDMEQKDYDSRTALHVAEEGHIEVVKFLIEACKVNPFAKDRWGNIPLDLDAVQFNHLEVVKLLQDYQDSY TLSETQAEAAAEEALSKENLESMV

靶点信息

研究背景	The protein encoded by this gene is a mitochondrial phosphate-activated glutaminase that catalyzes the hydrolysis of glutamine to stoichiometric amounts of glutamate and ammonia. Originally thought to be liver-specific, this protein has been found in other tissues as well. Alternative splicing results in multiple transcript variants that encode different isoforms.
基因ID	27165

基因名	GLS2
Swiss	Q9UI32
别名	GLS2;GA;GLS;LGA;hLGA

产品验证



Western blot analysis of GLS2 expressed in Mouse kidney,Rat kidney using GLS2 Rabbit pAb at 1:1000. Secondary antibody: HRP Goat Anti-Rabbit IgG (H+L) at 1:5000. Lysates/proteins: 30ug per lane. Blocking buffer: 5% non-fat dry milk in TBST. Detection: ECL Enhanced Kit. Exposure time: 120s.

实验步骤

访问官网浏览详情: www.ablybio.cn