

# MASP2 Rabbit pAb

货号: **AYP18059**

## 产品信息

|       |  |
|-------|--|
| 反应    | Human,Mouse,Rat  |
| 宿主    | Rabbit   |
| 克隆性   | Polyclonal   |
| 预测反应  |  |
| 应用    | WB   |
| 推荐浓度  | <b>WB:</b> 1:500 - 1:2000  |
| 理论分子量 | 20kDa/75kDa  |
| 实测分子量 | 76kDa  |
| 形式    | Liquid   |
| 保存条件  | Store at -20°C. Avoid freeze / thaw cycles.<br>Buffer: PBS with 0.01% thiomersal,50% glycerol,pH7.3. |
| 偶联物   | Unconjugated   |
| 阳性对照  | HepG2,U-87MG,Mouse liver,Rat kidney  |
| 细胞定位  | external side of plasma membrane,extracellular exosome,extracellular region,extracellular space      |
| 纯化    | Affinity purification  |

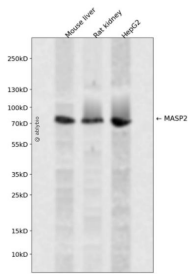
## 抗原信息

|      |   |
|------|---|
| 抗原信息 | Recombinant fusion protein containing a sequence corresponding to amino acids 445-686 of human MASP2 (NP_006601.2).   |
| 序列   | IYGGQKAKPGDFPWQVLILGGTTAAGALLYDNWVLTAAHAVYEQKHDASALDIRMGTLKRLSPHYTQAWSEAVFIHEGYT<br>HDAGFDNDIALIKLNNKVVINSNITPICLPRKEAESFMRTDDIGTASGWGLTQRGFLARNLMYVDIPIVDHQKCTAAYEKPPY<br>PRGSVTANMLCAGLESGGKDCRGGDSGGALVFLDSETERWVFGGIVSWGSMNCGEAGQYGVYTKVINYPWIENIISDF |

## 靶点信息

|       |   |
|-------|---|
| 研究背景  | This gene encodes a member of the peptidase S1 family of serine proteases. The encoded preproprotein is proteolytically processed to generate A and B chains that heterodimerize to form the mature protease. This protease cleaves complement components C2 and C4 in order to generate C3 convertase in the lectin pathway of the complement system. The encoded protease also plays a role in the coagulation cascade through cleavage of prothrombin to form thrombin. Myocardial infarction and acute stroke patients exhibit reduced serum concentrations of the encoded protein. Alternative splicing results in multiple transcript variants, at least one of which encodes an isoform that is proteolytically processed. |
| 基因ID  | 10747   |
| 基因名   | MASP2   |
| Swiss | O00187  |
| 别名    | MASP2;MAP19;MASP-2;MASP1P1;sMAP   |

## 产品验证



Western blot analysis of MASP2 expressed in Mouse liver,Rat kidney,HepG2 using MASP2 Rabbit pAb at 1:1000. Secondary antibody: HRP Goat Anti-Rabbit IgG (H+L) at 1:5000. Lysates/proteins: 30ug per lane. Blocking buffer: 5% non-fat dry milk in TBST. Detection: ECL Enhanced Kit. Exposure time: 120s.

## 实验步骤

访问官网浏览详情: [www.ablybio.cn](http://www.ablybio.cn)