

# CCDC6 Rabbit pAb

货号: **AYP18049**

## 产品信息

反应	Human,Mouse,Rat
宿主	Rabbit
克隆性	Polyclonal
预测反应	
应用	WB IHC IF/ICC
推荐浓度	<b>WB:</b> 1:500 - 1:2000 <b>IHC:</b> 1:50 - 1:200 <b>IF/ICC:</b> 1:50 - 1:200
理论分子量	53kDa
实测分子量	56kDa
形式	Liquid
保存条件	Store at -20°C. Avoid freeze / thaw cycles. Buffer: PBS with 0.01% thiomersal,50% glycerol,pH7.3.
偶联物	Unconjugated
阳性对照	MCF7,HeLa,Jurkat,Mouse brain
细胞定位	Cytoplasm,cytoskeleton
纯化	Affinity purification

## 抗原信息

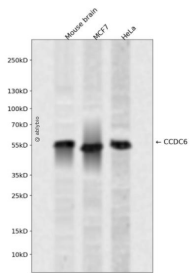
抗原信息	Recombinant fusion protein containing a sequence corresponding to amino acids 55-222 of human CCDC 6 (NP_005427.2).
序列	RLEELTNRLASLQQENKVLKIELETYKCLKCKALQEENRDLRKASVTIQARAEQEEEFISNTLFKKIQALQKEKETLAVNYEKEEE FLTNELSRKLMQLQHEKAELEQHLQEQEFQVNKLMKKIKKLENDTISKQLTLEQLRREKIDLENTLEQEQEALVNRLWKRMD

## 靶点信息

研究背景	This gene encodes a coiled-coil domain-containing protein. The encoded protein is ubiquitously expressed and may function as a tumor suppressor. A chromosomal rearrangement resulting in the expression of a fusion gene containing a portion of this gene and the intracellular kinase-encoding domain of the ret proto-oncogene is the cause of thyroid papillary carcinoma.
------	---

基因ID	8030
基因名	CCDC6
Swiss	Q16204
别名	CCDC6;D10S170;H4;PTC;TPC;TST1

## 产品验证



Western blot analysis of CCDC6 expressed in Mouse brain, MCF7, HeLa using CCDC6 Rabbit pAb at 1:1000. Secondary antibody: HRP Goat Anti-Rabbit IgG (H+L) at 1:5000. Lysates/proteins: 30ug per lane. Blocking buffer: 5% non-fat dry milk in TBST. Detection: ECL Enhanced Kit. Exposure time: 120s.

## 实验步骤

访问官网浏览详情: [www.ablybio.cn](http://www.ablybio.cn)