

EML4 Rabbit pAb

货号: **AYP18040**

产品信息

反应	Human,Mouse,Rat
宿主	Rabbit
克隆性	Polyclonal
预测反应	
应用	WB IHC IF/ICC
推荐浓度	WB: 1:500 - 1:2000 IHC: 1:50 - 1:200 IF/ICC: 1:50 - 1:200
理论分子量	102kDa/108kDa
实测分子量	120kDa
形式	Liquid
保存条件	Store at -20°C. Avoid freeze / thaw cycles. Buffer: PBS with 0.01% thiomersal,50% glycerol,pH7.3.
偶联物	Unconjugated
阳性对照	HepG2
细胞定位	Cytoplasm,cytoskeleton
纯化	Affinity purification

抗原信息

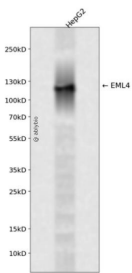
抗原信息	Recombinant fusion protein containing a sequence corresponding to amino acids 360-560 of human EML4 (NP_061936.2).
序列	GTFERGVGCLDFSKADSGVHLCVIDDSNEHMLTVWDWQKKAKGAEIKTTNEVVLAVEFHPTDANTIITCGKSHIFFWTW SGNSLTRKQGIFGKYEKPKFVQCLAFGLNGDVLTDGSSGVMLIWSKTTVEPTPGKGPKGVYQISKQIKAHDGVSFTLCQM RNGMLLTGGGKDRKIILWDHDLNPEREIEVPDQYGTIRAVAE

靶点信息

研究背景	This gene is a member of the echinoderm microtubule associated protein-like family. The encoded WD-repeat protein may be involved in microtubule formation. Abnormal fusion of parts of this gene with portions of the anaplastic lymphoma receptor tyrosine kinase gene, which generates EML4-ALK fusion transcripts, is one of the primary mutations associated with non-small cell lung cancer. Alternative splicing of this gene results in two transcript variants.
------	--

基因ID	27436
基因名	EML4
Swiss	Q9HC35
别名	EML4;C2orf2;ELP120;EMAP-4;EMAPL4;ROPP120

产品验证



Western blot analysis of EML4 expressed in HepG2 using EML4 Rabbit pAb at 1:1000. Secondary antibody: HRP Goat Anti-Rabbit IgG (H+L) at 1:5000. Lysates/proteins: 30ug per lane. Blocking buffer: 5% non-fat dry milk in TBST. Detection: ECL Enhanced Kit. Exposure time: 120s.

实验步骤

访问官网浏览详情: www.ablybio.cn