

MAS1L Rabbit pAb

货号: **AYP18037**

产品信息

反应	Mouse,Rat
宿主	Rabbit
克隆性	Polyclonal
预测反应	
应用	WB
推荐浓度	WB: 1:500 - 1:2000
理论分子量	42kDa
实测分子量	42kDa
形式	Liquid
保存条件	Store at -20°C. Avoid freeze / thaw cycles. Buffer: PBS with 0.01% thiomersal,50% glycerol,pH7.3.
偶联物	Unconjugated
阳性对照	Mouse liver,Rat liver
细胞定位	Cell membrane,Multi-pass membrane protein
纯化	Affinity purification

抗原信息

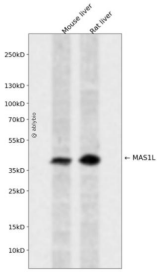
抗原信息	Recombinant fusion protein containing a sequence corresponding to amino acids 1-70 of human MAS1L (NP_443199.1).
序列	MVWGKICWFSQRAGWTVFAESQISLSCSLCLHSGDQEAQNPNLVSQLCGVFLQNETNETIHMQMMSMAVGQ

靶点信息

研究背景	Predicted to enable G protein-coupled receptor activity. Predicted to be involved in G protein-coupled receptor signaling pathway. Located in cytosol; nucleoplasm; and plasma membrane.
基因ID	116511
基因名	MAS1L

Swiss	P35410
别名	MAS1L;MAS-L;MRG;dJ994E9.2

产品验证



Western blot analysis of MAS1L expressed in Mouse liver,Rat liver using MAS1L Rabbit pAb at 1:1000. Secondary antibody: HRP Goat Anti-Rabbit IgG (H+L) at 1:5000. Lysates/proteins: 30ug per lane. Blocking buffer: 5% non-fat dry milk in TBST. Detection: ECL Enhanced Kit. Exposure time: 120s.

实验步骤

访问官网浏览详情: www.ablybio.cn