

KREMEN2 Rabbit pAb

货号: **AYP18026**

产品信息

反应	Mouse,Rat
宿主	Rabbit
克隆性	Polyclonal
预测反应	
应用	WB
推荐浓度	WB: 1:500 - 1:2000
理论分子量	40kDa/42kDa/44kDa/45kDa/48kDa
实测分子量	48kDa
形式	Liquid
保存条件	Store at -20°C. Avoid freeze / thaw cycles. Buffer: PBS with 0.01% thiomersal,50% glycerol,pH7.3.
偶联物	Unconjugated
阳性对照	Mouse brain,Rat brain
细胞定位	plasma membrane
纯化	Affinity purification

抗原信息

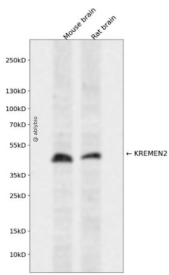
抗原信息	Recombinant fusion protein containing a sequence corresponding to amino acids 200-360 of human KREMEN2 (NP_078783.1).
序列	GQLCGGDGRLGVYEVSVGSCQGNWTAPQGVIIYSPDFPDEYGPDRNCWALGPPGALELTFRLFELADPRDRLELRDA ASGSLLRAFD GARPPPSGPLRLGTAALLLTFRSDARGHAQGFALTYRGLQDAAEDPEAPEGSAQTPAAPLDGANVSCSPR PGA

靶点信息

研究背景	This gene encodes a high-affinity dickkopf homolog 1 (DKK1) transmembrane receptor. A similar protein in mouse functions interacts with DKK1 to block wingless (WNT)/beta-catenin signaling. The encoded protein forms a ternary membrane complex with DKK1 and the WNT receptor lipoprotein receptor-related protein 6 (LRP6), and induces rapid endocytosis and removal of LRP6 from the plasma membrane. It contains extracellular kringle, WSC, and CUB domains. Alternatively spliced transcript variants encoding distinct isoforms have been observed for this gene.
------	---

基因ID	79412
基因名	KREMEN2
Swiss	Q8NCW0
别名	KREMEN2;KRM2

产品验证



Western blot analysis of KREMEN2 expressed in Mouse brain,Rat brain using KREMEN2 Rabbit pAb at 1:1 000. Secondary antibody: HRP Goat Anti-Rabbit IgG (H+L) at 1:5000. Lysates/proteins: 30ug per lane. Bl ocking buffer: 5% non-fat dry milk in TBST. Detection: ECL Enhanced Kit. Exposure time: 120s.

实验步骤

访问官网浏览详情: www.ablybio.cn