

CXCL6 Rabbit pAb

货号: **AYP18023**

产品信息

反应	Human,Mouse
宿主	Rabbit
克隆性	Polyclonal
预测反应	
应用	WB
推荐浓度	WB: 1:500 - 1:2000
理论分子量	11kDa
实测分子量	17kDa
形式	Liquid
保存条件	Store at -20°C. Avoid freeze / thaw cycles. Buffer: PBS with 0.01% thiomersal,50% glycerol,pH7.3.
偶联物	Unconjugated
阳性对照	LO2,A-549,Mouse kidney
细胞定位	extracellular region,extracellular space
纯化	Affinity purification

抗原信息

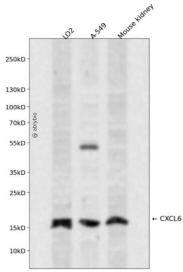
抗原信息	Recombinant fusion protein containing a sequence corresponding to amino acids 38-114 of human CXCL6 (NP_002984.1).
序列	GPVSAVLTELRACTLRVTLRVNPKTIGKLQVFPAGPQCSKVEVWASLKNGKQVCLDPEAPFLKKVIQKILDSGNKKN

靶点信息

研究背景	Chemotactic for neutrophil granulocytes. Signals through binding and activation of its receptors (CXCR1 and CXCR2). In addition to its chemotactic and angiogenic properties, it has strong antibacterial activity against Gram-positive and Gram-negative bacteria (90-fold-higher when compared to CXCL5 and CXCL7).
基因ID	6372
基因名	CXCL6

Swiss	P80162
别名	CXCL6;CKA-3;GCP-2;GCP2;SCYB6

产品验证



Western blot analysis of CXCL6 expressed in LO2,A-549,Mouse kidney using CXCL6 Rabbit pAb at 1:1000. Secondary antibody: HRP Goat Anti-Rabbit IgG (H+L) at 1:5000. Lysates/proteins: 30ug per lane. Blocking buffer: 5% non-fat dry milk in TBST. Detection: ECL Enhanced Kit. Exposure time: 120s.

实验步骤

访问官网浏览详情: www.ablybio.cn