

SDHAF2 Rabbit pAb

货号: **AYP18021**

产品信息

反应	Human,Mouse
宿主	Rabbit
克隆性	Polyclonal
预测反应	
应用	WB
推荐浓度	WB: 1:500 - 1:2000
理论分子量	19kDa
实测分子量	15kDa
形式	Liquid
保存条件	Store at -20°C. Avoid freeze / thaw cycles. Buffer: PBS with 0.01% thiomersal,50% glycerol,pH7.3.
偶联物	Unconjugated
阳性对照	HeLa,mouse kidney,mouse stomach,mouse brain
细胞定位	cytosol,mitochondrial matrix,mitochondrion,nucleolus
纯化	Affinity purification

抗原信息

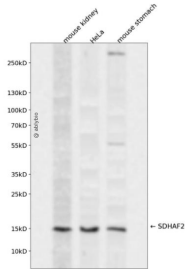
抗原信息	Recombinant fusion protein containing a sequence corresponding to amino acids 1-166 of human SDHAF2 (NP_060311.1).
序列	MAVSTVFSTSSMLALSRLSLLSPLLSVTSFRRFYRGDSPTDSQKDMIEIPLPPWQERTDESIETKRARLLYESRKRGMLEN CILLSLFAKEHLQHMTKQLNLYDRLINEPSNDWDIYYWATEAKPAPEIFENEVMALLRDFAKNKNKEQLRAPDLEYLFEK R

靶点信息

研究背景	This gene encodes a mitochondrial protein needed for the flavination of a succinate dehydrogenase complex subunit required for activity of the complex. Mutations in this gene are associated with paraganglioma .
基因ID	54949

基因名	SDHAF2
Swiss	Q9NX18
别名	SDHAF2;C11orf79;PGL2;SDH5

产品验证



Western blot analysis of SDHAF2 expressed in mouse kidney, HeLa, mouse stomach using SDHAF2 Rabbit pAb at 1:1000. Secondary antibody: HRP Goat Anti-Rabbit IgG (H+L) at 1:5000. Lysates/proteins: 30ug per lane. Blocking buffer: 5% non-fat dry milk in TBST. Detection: ECL Enhanced Kit. Exposure time: 120s.

实验步骤

访问官网浏览详情: www.ablybio.cn