

PGRMC2 Rabbit pAb

货号: **AYP18018**

产品信息

反应	Human,Mouse
宿主	Rabbit
克隆性	Polyclonal
预测反应	
应用	WB IF/ICC
推荐浓度	WB: 1:500 - 1:2000 IF/ICC: 1:50 - 1:200
理论分子量	23kDa/26kDa
实测分子量	23kDa
形式	Liquid
保存条件	Store at -20°C. Avoid freeze / thaw cycles. Buffer: PBS with 0.01% thiomersal,50% glycerol,pH7.3.
偶联物	Unconjugated
阳性对照	MCF-7
细胞定位	endoplasmic reticulum,nuclear envelope
纯化	Affinity purification

抗原信息

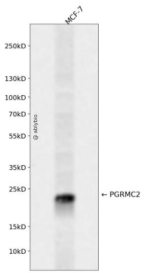
抗原信息	A synthetic peptide corresponding to a sequence within amino acids 1-50 of human PGRMC2 (NP_006311.3).
序列	MAAGDGDVKLGLTSGSESSNDGGSESPGDAGAAAEGGGWAAAALALLTG

靶点信息

研究背景	Required for the maintenance of uterine histoarchitecture and normal female reproductive lifespan (By similarity). May serve as a universal non-classical progesterone receptor in the uterus (Probable). Intracellular heme chaperone required for delivery of labile, or signaling heme, to the nucleus (By similarity). Plays a role in adipocyte function and systemic glucose homeostasis. In brown fat, which has a high demand for heme, delivery of labile heme in the nucleus regulates the activity of heme-responsive transcriptional repressors such as NR1D1 and BACH1 (By similarity).
------	--

基因ID	10424
基因名	PGRMC2
Swiss	O15173
别名	PGRMC2;DG6;PMBP

产品验证



Western blot analysis of PGRMC2 expressed in MCF-7 using PGRMC2 Rabbit pAb at 1:1000. Secondary antibody: HRP Goat Anti-Rabbit IgG (H+L) at 1:5000. Lysates/proteins: 30ug per lane. Blocking buffer: 5% non-fat dry milk in TBST. Detection: ECL Enhanced Kit. Exposure time: 120s.

实验步骤

访问官网浏览详情: www.ablybio.cn