

# PEDF/SERPINF1 Rabbit pAb

货号: **AYP18005**

## 产品信息

反应	Human,Mouse
宿主	Rabbit
克隆性	Polyclonal
预测反应	
应用	WB
推荐浓度	<b>WB:</b> 1:500 - 1:1000
理论分子量	46kDa
实测分子量	46KDa
形式	Liquid
保存条件	Store at -20°C. Avoid freeze / thaw cycles. Buffer: PBS with 0.01% thiomersal,50% glycerol,pH7.3.
偶联物	Unconjugated
阳性对照	HepG2,Mouse liver,Human serum
细胞定位	Melanosome,Secreted
纯化	Affinity purification

## 抗原信息

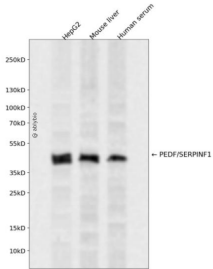
抗原信息	A synthetic peptide corresponding to a sequence within amino acids 150-250 of human PEDF/SERPINF1 (NP_002606.3).
序列	IKSSFVAPLEKSYGTRPRVLTGNPRLDLQEINNWWVQAQMKGKLARSTKEIPDEISILLGVAHFKGQWVTKFDSRKSLEDFYLDEERTVRVPMMSDPKAV

## 靶点信息

研究背景	The protein encoded by this gene is a member of the serpin family, although it does not display the serine protease inhibitory activity shown by many of the other serpin family members. The encoded protein is secreted and strongly inhibits angiogenesis. In addition, this protein is a neurotrophic factor involved in neuronal differentiation in retinoblastoma cells.
基因ID	5176

基因名	SERPINF1
Swiss	P36955
别名	SERPINF1;EPC-1;OI12;OI6;PEDF;PIG35

## 产品验证



Western blot analysis of PEDF/SERPINF1 expressed in HepG2, Mouse liver, Human serum using PEDF/SERPINF1 Rabbit pAb at 1:1000. Secondary antibody: HRP Goat Anti-Rabbit IgG (H+L) at 1:5000. Lysates/proteins: 30ug per lane. Blocking buffer: 5% non-fat dry milk in TBST. Detection: ECL Enhanced Kit. Exposure time: 120s.

## 实验步骤

访问官网浏览详情: [www.ablybio.cn](http://www.ablybio.cn)