

F12 Rabbit pAb

货号: **AYP18001**

产品信息

反应	Human,Mouse
宿主	Rabbit
克隆性	Polyclonal
预测反应	
应用	WB
推荐浓度	WB: 1:500 - 1:2000
理论分子量	67kDa
实测分子量	71kDa
形式	Liquid
保存条件	Store at -20°C. Avoid freeze / thaw cycles. Buffer: PBS with 0.02% sodium azide,50% glycerol,pH7.3.
偶联物	Unconjugated
阳性对照	HepG2,MCF7,Mouse liver
细胞定位	Secreted
纯化	Affinity purification

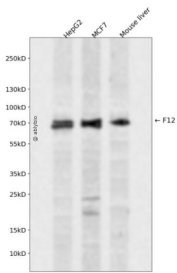
抗原信息

抗原信息	Recombinant fusion protein containing a sequence corresponding to amino acids 336-615 of human F12 (NP_000496.2).
序列	QTPGALPAKREQPPSLTRNGPLSCGQRLRKSLSMTRVVGGLVALRGAAHPYIAALYWGHSHFCAGSLIAPCWVLTAAHCLQ DRPAPEDLTVVLGQERRNHSCEPCQTLAVRSYRLHEAFSPVSYQHDLALLRLQEDADGSCALLSPYVQPVCLPSGAARPSE TTLCQVAGWGHQFEGAEYASFLQEAQVPFSLERCSAPDVHGSSILPGMLCAGFLEGGTDACQGDSSGGPLVCEDQAA ERRLTLQGIISWGS GCGDRNKPGVYTDVAYYLAWIREHTVS

靶点信息

研究背景	This gene encodes coagulation factor XII which circulates in blood as a zymogen. This single chain zymogen is converted to a two-chain serine protease with an heavy chain (alpha-factor XIIa) and a light chain. The heavy chain contains two fibronectin-type domains, two epidermal growth factor (EGF)-like domains, a kringle domain and a proline-rich domain, whereas the light chain contains only a catalytic domain. On activation, further cleavages takes place in the heavy chain, resulting in the production of beta-factor XIIa light chain and the alpha-factor XIIa heavy chain. Prekallikrein is cleaved by factor XII to form kallikrein, which then cleaves factor XII first to alpha-factor XIIa and then to beta-factor XIIa. The active factor XIIa participates in the initiation of blood coagulation, fibrinolysis, and the generation of bradykinin and angiotensin. It activates coagulation factors VII and XI. Defects in this gene do not cause any clinical symptoms and the sole effect is that whole-blood clotting time is prolonged.
基因ID	2161
基因名	F12
Swiss	P00748
别名	F12;HAE3;HAEX;HAF

产品验证



Western blot analysis of F12 expressed in HepG2, MCF7, Mouse liver using F12 Rabbit pAb at 1:1000. Secondary antibody: HRP Goat Anti-Rabbit IgG (H+L) at 1:5000. Lysates/proteins: 30ug per lane. Blocking buffer: 5% non-fat dry milk in TBST. Detection: ECL Enhanced Kit. Exposure time: 120s.

实验步骤

访问官网浏览详情: www.ablybio.cn