

KIR2DL3 Rabbit pAb

货号: **AYP17999**

产品信息

| | |
|-------|--|
| 反应 | Human,Mouse |
| 宿主 | Rabbit |
| 克隆性 | Polyclonal |
| 预测反应 | |
| 应用 | WB IF/ICC |
| 推荐浓度 | WB: 1:500 - 1:2000 IF/ICC: 1:50 - 1:200 |
| 理论分子量 | 27kDa/37kDa |
| 实测分子量 | 45kDa |
| 形式 | Liquid |
| 保存条件 | Store at -20°C. Avoid freeze / thaw cycles. Buffer: PBS with 0.02% sodium azide,50% glycerol,pH7.3. |
| 偶联物 | Unconjugated |
| 阳性对照 | HepG2,Mouse liver,Mouse kidney,Mouse heart |
| 细胞定位 | Cell membrane,Single-pass type I membrane protein |
| 纯化 | Affinity purification |

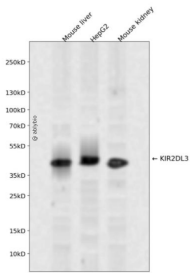
抗原信息

| | |
|------|--|
| 抗原信息 | Recombinant fusion protein containing a sequence corresponding to amino acids 22-245 of human KIR2DL3 (NP_056952.2). |
| 序列 | HEGVHRKPSLLAHPGPLVKSEETVILQCWSDVRFQHFLLHREGKFKDRTLHLIGEHHHDGVSKANFSIGPMMQDLAGTYRCYGSVTHSPYQLSAPSDPLDIVITGLYEKPSLSAQPGPTVLAGESVTLSCSSRSSYDMYHLSREGEAHERRFSAGPKVNGTFQADFPLGPATHGGTYRCFGSFRDSPYEWSNSSDPLLVSVTGNPSNSWPSPTEPSSETGNPRHLH |

靶点信息

| | |
|-------|--|
| 研究背景 | Killer cell immunoglobulin-like receptors (KIRs) are transmembrane glycoproteins expressed by natural killer cells and subsets of T cells. The KIR genes are polymorphic and highly homologous and they are found in a cluster on chromosome 19q13.4 within the 1 Mb leukocyte receptor complex (LRC). The gene content of the KIR gene cluster varies among haplotypes, although several 'framework' genes are found in all haplotypes (KIR3DL3, KIR3DP1, KIR3DL4, KIR3DL2). The KIR proteins are classified by the number of extracellular immunoglobulin domains (2D or 3D) and by whether they have a long (L) or short (S) cytoplasmic domain. KIR proteins with the long cytoplasmic domain transduce inhibitory signals upon ligand binding via an immune tyrosine-based inhibitory motif (ITIM), while KIR proteins with the short cytoplasmic domain lack the ITIM motif and instead associate with the TYRO protein tyrosine kinase binding protein to transduce activating signals. The ligands for several KIR proteins are subsets of HLA class I molecules; thus, KIR proteins are thought to play an important role in regulation of the immune response. |
| 基因ID | 3804 |
| 基因名 | KIR2DL3 |
| Swiss | P43628 |
| 别名 | KIR2DL3;CD158B2;CD158b;GL183;KIR-023GB;KIR-K7b;KIR-K7c;KIR2DS5;KIRCL23;NKAT;NKAT2;NKAT2A;NKAT2B;p58 |

产品验证



Western blot analysis of KIR2DL3 expressed in Mouse liver, HepG2, Mouse kidney using KIR2DL3 Rabbit pAb at 1:1000. Secondary antibody: HRP Goat Anti-Rabbit IgG (H+L) at 1:5000. Lysates/proteins: 30ug per lane. Blocking buffer: 5% non-fat dry milk in TBST. Detection: ECL Enhanced Kit. Exposure time: 120s.

实验步骤

访问官网浏览详情: www.ablybio.cn