

# FCER1A Rabbit pAb

货号: **AYP17985**

## 产品信息

反应	Human
宿主	Rabbit
克隆性	Polyclonal
预测反应	
应用	WB
推荐浓度	<b>WB:</b> 1:500 - 1:2000
理论分子量	29kDa
实测分子量	68kDa
形式	Liquid
保存条件	Store at -20°C. Avoid freeze / thaw cycles. Buffer: PBS with 0.02% sodium azide,50% glycerol,pH7.3.
偶联物	Unconjugated
阳性对照	K562,HT-29
细胞定位	Cell membrane,Single-pass type I membrane protein
纯化	Affinity purification

## 抗原信息

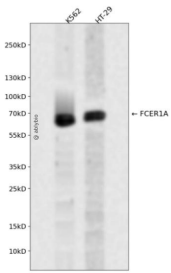
抗原信息	Recombinant fusion protein containing a sequence corresponding to amino acids 26-205 of human FCER1 A (NP_001992.1).
序列	VPQKPKVSLNPPWNRIFKGENVTLCNGNNFFEVSSTKWFHNGSLSEETNSSLNIVNAKFEDSGEYKQCQHQVNESEPVY LEVFSDWLLLQASAEVVMGQPLFLRCHGWRNWDVYKVIYYKDGEALKYWYENHNISITNATVEDSGTYCTGKVVQLD YESEPLNITVIKAPREKYWLQ

## 靶点信息

研究背景	The immunoglobulin epsilon receptor (IgE receptor) is the initiator of the allergic response. When two or more high-affinity IgE receptors are brought together by allergen-bound IgE molecules, mediators such as histamine that are responsible for allergy symptoms are released. This receptor is comprised of an alpha subunit, a beta subunit, and two gamma subunits. The protein encoded by this gene represents the alpha subunit.
------	---

基因ID	2205
基因名	FCER1A
Swiss	P12319
别名	FCER1A;FCE1A;FcERI

## 产品验证



Western blot analysis of FCER1A expressed in K562,HT-29 using FCER1A Rabbit pAb at 1:1000. Secondary antibody: HRP Goat Anti-Rabbit IgG (H+L) at 1:5000. Lysates/proteins: 30ug per lane. Blocking buffer: 5% non-fat dry milk in TBST. Detection: ECL Enhanced Kit. Exposure time: 120s.

## 实验步骤

访问官网浏览详情: [www.ablybio.cn](http://www.ablybio.cn)