

# KLK1 Rabbit pAb

货号: **AYP17961**

## 产品信息

反应	Human,Mouse,Rat
宿主	Rabbit
克隆性	Polyclonal
预测反应	
应用	WB IHC
推荐浓度	<b>WB:</b> 1:500 - 1:2000 <b>IHC:</b> 1:100 - 1:500
理论分子量	23kDa/28kDa
实测分子量	22kDa
形式	Liquid
保存条件	Store at -20°C. Avoid freeze / thaw cycles. Buffer: PBS with 0.02% sodium azide,50% glycerol,pH7.3.
偶联物	Unconjugated
阳性对照	SW480,K-562
细胞定位	extracellular exosome,nucleus
纯化	Affinity purification

## 抗原信息

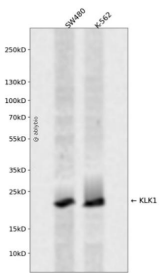
抗原信息	Recombinant fusion protein containing a sequence corresponding to amino acids 25-262 of human KLK1 ( NP_002248.1).
序列	IVGGWECEQHSQPWQAALYHFSTFQCGGILVHRQWVLTAAHCSIDNYQLWLGRHNLFDSENTAQFVHVSESFPHPGFN MSLLENHTRQADEDYSHDLMLRLTEPADTITDAVKVVELPTEEPEVGSTCLASGWGSIENFSFPDDLQCVDLKILPND ECKKAHVQKVTFMFLCVGHLEGGKDTCVGDSGGPLMCDGVLQGVTSWGYVPCGTPNKPSVAVRVLSYVKWIEDTIAEN S

## 靶点信息

研究背景	Kallikreins are a subgroup of serine proteases having diverse physiological functions. Growing evidence suggests that many kallikreins are implicated in carcinogenesis and some have potential as novel cancer and other disease biomarkers. This gene is one of the fifteen kallikrein subfamily members located in a cluster on chromosome 19. This protein is functionally conserved in its capacity to release the vasoactive peptide, Lys-bradykinin, from low molecular weight kininogen.
------	--

基因ID	3816
基因名	KLK1
Swiss	P06870
别名	KLK1;KLKR;Klk6;hK1

### 产品验证



Western blot analysis of KLK1 expressed in SW480, K-562 using KLK1 Rabbit pAb at 1:1000. Secondary antibody: HRP Goat Anti-Rabbit IgG (H+L) at 1:5000. Lysates/proteins: 30ug per lane. Blocking buffer: 5% non-fat dry milk in TBST. Detection: ECL Enhanced Kit. Exposure time: 120s.

### 实验步骤

访问官网浏览详情: [www.ablybio.cn](http://www.ablybio.cn)