

SLC25A4/ANT1 Rabbit pAb

货号: AYP17939

产品信息

反应	Human,Mouse,Rat
宿主	Rabbit
克隆性	Polyclonal
预测反应	
应用	WB IF/ICC
推荐浓度	WB: 1:500 - 1:1000 IF/ICC: 1:50 - 1:200
理论分子量	33kDa
实测分子量	33KDa
形式	Liquid
保存条件	Store at -20°C. Avoid freeze / thaw cycles. Buffer: PBS with 0.05% proclin300,50% glycerol,pH7.3.
偶联物	Unconjugated
阳性对照	293T,MCF7,Mouse liver,Rat heart
细胞定位	Mitochondrion inner membrane,Multi-pass membrane protein
纯化	Affinity purification

抗原信息

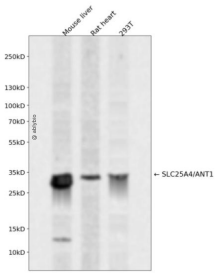
抗原信息	A synthetic peptide corresponding to a sequence within amino acids 100-200 of human SLC25A4/ANT1 (NP_001142.2).
序列	LGGVDRHKQFWRYFAGNLAGGGAAGATSLCFVYPLDFARTRLAADVKGAAQREFHGLGDCIIFKSDGLRGLYQGFN VSVQGIIRAAAYFGVYDTAKG

靶点信息

研究背景	This gene is a member of the mitochondrial carrier subfamily of solute carrier protein genes. The product of this gene functions as a gated pore that translocates ADP from the cytoplasm into the mitochondrial matrix and ATP from the mitochondrial matrix into the cytoplasm. The protein forms a homodimer embedded in the inner mitochondria membrane. Mutations in this gene have been shown to result in autosomal dominant progressive external ophthalmoplegia and familial hypertrophic cardiomyopathy.
------	--

基因ID	291
基因名	SLC25A4
Swiss	P12235
别名	SLC25A4;AAC1;ANT;ANT 1;ANT1;MTDPS12;MTDPS12A;PEO2;PEO3;PEOA2;T1

产品验证



Western blot analysis of SLC25A4/ANT1 expressed in Mouse liver,Rat heart,293T using SLC25A4/ANT 1 Rabbit pAb at 1:1000. Secondary antibody: HRP Goat Anti-Rabbit IgG (H+L) at 1:5000. Lysates/pro teins: 30ug per lane. Blocking buffer: 5% non-fat dry milk in TBST. Detection: ECL Enhanced Kit. Exp osure time: 120s.

实验步骤

访问官网浏览详情: www.ablybio.cn