

# LIPG Rabbit pAb

货号: **AYP17937**

## 产品信息

反应	Human,Mouse,Rat
宿主	Rabbit
克隆性	Polyclonal
预测反应	
应用	WB
推荐浓度	<b>WB:</b> 1:500 - 1:2000
理论分子量	39kDa/56kDa
实测分子量	60kDa
形式	Liquid
保存条件	Store at -20°C. Avoid freeze / thaw cycles. Buffer: PBS with 0.02% sodium azide,50% glycerol,pH7.3.
偶联物	Unconjugated
阳性对照	HepG2,A-549,Mouse liver
细胞定位	Secreted
纯化	Affinity purification

## 抗原信息

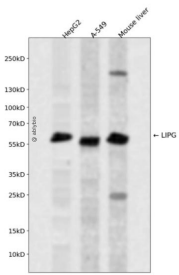
抗原信息	Recombinant fusion protein containing a sequence corresponding to amino acids 251-500 of human LIPG (NP_006024.1).
序列	GCGLNDVLGSIAYGTITEVVKCEHERAVHLFVDSLVDKPSFAFQCTDSNRFKKGICLSRKNRCSIGYNAKKMRNKR NSKMYLKTRAGMPFRVYHYQMKIHVFSYKNMGEIEPTFYVTLYGTNADSQLPLEIVERIEQNATNTFLVYTEEDLGDLLKIQ LTWEGASQSWYNLWKEFRSYLSQPRNPGRELNIRRIRVKSGETQRKLTFCCTEDPENTSISPGRELWFRKCRDGWRMKNE TSPTVELP

## 靶点信息

研究背景	The protein encoded by this gene has substantial phospholipase activity and may be involved in lipoprotein metabolism and vascular biology. This protein is designated a member of the TG lipase family by its sequence and characteristic lid region which provides substrate specificity for enzymes of the TG lipase family.
------	---

基因ID	9388
基因名	LIPG
Swiss	Q9Y5X9
别名	LIPG;EDL;EL;PRO719

## 产品验证



Western blot analysis of LIPG expressed in HepG2,A-549,Mouse liver using LIPG Rabbit pAb at 1:1000. Secondary antibody: HRP Goat Anti-Rabbit IgG (H+L) at 1:5000. Lysates/proteins: 30ug per lane. Blocking buffer: 5% non-fat dry milk in TBST. Detection: ECL Enhanced Kit. Exposure time: 120s.

## 实验步骤

访问官网浏览详情: [www.ablybio.cn](http://www.ablybio.cn)