

SLPI Rabbit pAb

货号: **AYP17933**

产品信息

反应	Human,Mouse,Rat
宿主	Rabbit
克隆性	Polyclonal
预测反应	
应用	WB
推荐浓度	WB: 1:500 - 1:1000
理论分子量	14kDa
实测分子量	12KDa
形式	Liquid
保存条件	Store at -20°C. Avoid freeze / thaw cycles. Buffer: PBS with 0.05% proclin300,50% glycerol,pH7.3.
偶联物	Unconjugated
阳性对照	Mouse lung,Mouse spleen,Rat spleen
细胞定位	Secreted
纯化	Affinity purification

抗原信息

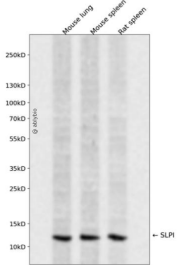
抗原信息	Recombinant fusion protein containing a sequence corresponding to amino acids 26-132 of human SLPI (NP_003055.1).
序列	SGKSFKAGVCPPKKSQAQLRYKKPECQSDWQCPGKKRCCPDTGIGKCLDPVDTNPTRRKP GKCPVTYGQCLMLNPPNFCEMDGQCKRDLKCCMGMCVKSCVSPVKA

靶点信息

研究背景	This gene encodes a secreted inhibitor which protects epithelial tissues from serine proteases. It is found in various secretions including seminal plasma, cervical mucus, and bronchial secretions, and has affinity for trypsin, leukocyte elastase, and cathepsin G. Its inhibitory effect contributes to the immune response by protecting epithelial surfaces from attack by endogenous proteolytic enzymes. This antimicrobial protein has antibacterial, antifungal and antiviral activity.
基因ID	6590

基因名	SLPI
Swiss	P03973
别名	SLPI;ALK1;ALP;BLPI;HUSI;HUSI-I;MPI;WAP4;WFDC4

产品验证



Western blot analysis of SLPI expressed in Mouse lung, Mouse spleen, Rat spleen using SLPI Rabbit pAb at 1:1000. Secondary antibody: HRP Goat Anti-Rabbit IgG (H+L) at 1:5000. Lysates/proteins: 30ug per lane . Blocking buffer: 5% non-fat dry milk in TBST. Detection: ECL Enhanced Kit. Exposure time: 120s.

实验步骤

访问官网浏览详情: www.ablybio.cn