

— ABLYBIO, Help Your Research



PSMB5 Rabbit pAb

货号: **AYP17905**

产品信息

反应	Human,Mouse,Rat
宿主	Rabbit
克隆性	Polyclonal
预测反应	
应用	WB IF/ICC IP
推荐浓度	WB: 1:500 - 1:2000 IF/ICC: 1:50 - 1:200 IP: 1:50 - 1:100
理论分子量	17kDa/21kDa/28kDa
实测分子量	21kDa
形式	Liquid
保存条件	Store at -20°C. Avoid freeze / thaw cycles. Buffer: PBS with 0.02% sodium azide,50% glycerol,pH7.3.
偶联物	Unconjugated
阳性对照	BT-474,NCI-H460,Jurkat,293T,HepG2,Mouse brain,Mouse kidney,Mouse skeletal muscle,Mouse liver
细胞定位	Cytoplasm,Nucleus
纯化	Affinity purification

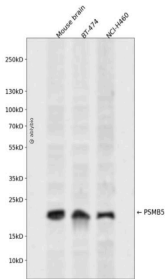
抗原信息

抗原信息	Recombinant fusion protein containing a sequence corresponding to amino acids 1-263 of human PSMB5 (NP_002788.1).
------	---

靶点信息

研究背景	The proteasome is a multicatalytic proteinase complex with a highly ordered ring-shaped 20S core structure. The core structure is composed of 4 rings of 28 non-identical subunits; 2 rings are composed of 7 alpha subunits and 2 rings are composed of 7 beta subunits. Proteasomes are distributed throughout eukaryotic cells at a high concentration and cleave peptides in an ATP/ubiquitin-dependent process in a non-lysosomal pathway. An essential function of a modified proteasome, the immunoproteasome, is the processing of class I MHC peptides. This gene encodes a member of the proteasome B-type family, also known as the T1B family, that is a 20S core beta subunit in the proteasome. This catalytic subunit is not present in the immunoproteasome and is replaced by catalytic subunit 3i (proteasome beta 8 subunit). Multiple transcript variants encoding different isoforms have been found for this gene.
基因ID	5693
基因名	PSMB5
Swiss	P28074 (https://www.uniprot.org/uniprotkb/P28074/entry)
别名	PSMB5,LMPX,MB1,X,PSMB5 Rabbit pAb,Macropain epsilon chain,Multicatalytic endopeptidase complex epsilon chain,Proteasome chain 6,Proteasome epsilon chain,Proteasome subunit MB1,Proteasome subunit X, Proteasome subunit beta-5

产品验证



Western blot analysis of PSMB5 expressed in Mouse brain,BT-474,NCI-H460 using PSMB5 Rabbit pAb at 1:1000. Secondary antibody: HRP Goat Anti-Rabbit IgG (H+L) at 1:5000. Lysates/proteins: 30ug per lane. Blocking buffer: 5% non-fat dry milk in TBST. Detection: ECL Enhanced Kit. Exposure time: 120s.

实验步骤

访问官网浏览详情: www.ablybio.cn (<https://www.ablybio.cn/www.ablybio.cn>)