

IPO5 Rabbit pAb

货号: **AYP17903**

产品信息

反应	Human,Mouse,Rat
宿主	Rabbit
克隆性	Polyclonal
预测反应	
应用	WB
推荐浓度	WB: 1:100 - 1:500
理论分子量	116kDa/123kDa/125kDa
实测分子量	124KDa
形式	Liquid
保存条件	Store at -20°C. Avoid freeze / thaw cycles. Buffer: PBS with 0.02% sodium azide,50% glycerol,pH7.3.
偶联物	Unconjugated
阳性对照	Mouse testis,Rat testis
细胞定位	Cytoplasm,Nucleus,nucleolus
纯化	Affinity purification

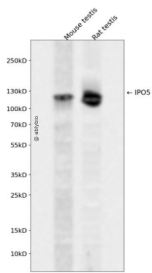
抗原信息

抗原信息	Recombinant fusion protein containing a sequence corresponding to amino acids 20-300 of human IPO5 (NP_002262.3).
序列	AAAAAEQQQFYLLGNLLSPDNVVRKQAEETYENIPGQSKITFLLQAIRNTTAAEEARQMAAVLLRRLSSAFDEVYPALPSD VQTAIKSELLMIQMETQSSMRKKVCDIAELARNLIDEDGNNQWPEGLKFLFDSVSSQNVGLREAAALHIFWNFPGIFGNQ QQHYLDVIKRMLVQCMQDQEHP SIRTLSARATAAFILANEHNVALFKHFADLLPGFLQAVNDSCYQNDSDSVLKS LVEIADT VPKYLRPHLEATLQLSLKCGDTS LNNMQRQLALEV

靶点信息

研究背景	Nucleocytoplasmic transport, a signal- and energy-dependent process, takes place through nuclear pore complexes embedded in the nuclear envelope. The import of proteins containing a nuclear localization signal (NLS) requires the NLS import receptor, a heterodimer of importin alpha and beta subunits also known as karyopherins. Importin alpha binds the NLS-containing cargo in the cytoplasm and importin beta docks the complex at the cytoplasmic side of the nuclear pore complex. In the presence of nucleoside triphosphates and the small GTP binding protein Ran, the complex moves into the nuclear pore complex and the importin subunits dissociate. Importin alpha enters the nucleoplasm with its passenger protein and importin beta remains at the pore. Interactions between importin beta and the FG repeats of nucleoporins are essential in translocation through the pore complex. The protein encoded by this gene is a member of the importin beta family.
基因ID	3843
基因名	IPO5
Swiss	O00410
别名	IPO5;IMB3;KPNB3;Pse1;RANBP5;imp5

产品验证



Western blot analysis of IPO5 expressed in Mouse testis, Rat testis using IPO5 Rabbit pAb at 1:1000. Secondary antibody: HRP Goat Anti-Rabbit IgG (H+L) at 1:5000. Lysates/proteins: 30ug per lane. Blocking buffer: 5% non-fat dry milk in TBST. Detection: ECL Enhanced Kit. Exposure time: 120s.

实验步骤

访问官网浏览详情: www.ablybio.cn