

CHIT1 Rabbit pAb

货号: **AYP17886**

产品信息

反应	Human,Mouse
宿主	Rabbit
克隆性	Polyclonal
预测反应	
应用	WB IHC
推荐浓度	WB: 1:500 - 1:2000 IHC: 1:50 - 1:200
理论分子量	43kDa/48kDa/49kDa/51kDa
实测分子量	52kDa
形式	Liquid
保存条件	Store at -20°C. Avoid freeze / thaw cycles. Buffer: PBS with 0.01% thiomersal,50% glycerol,pH7.3.
偶联物	Unconjugated
阳性对照	U-251MG,293T,Mouse spleen,Mouse skeletal muscle
细胞定位	Lysosome,Secreted
纯化	Affinity purification

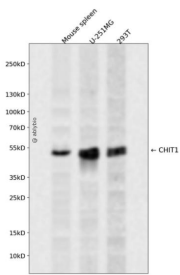
抗原信息

抗原信息	Recombinant fusion protein containing a sequence corresponding to amino acids 217-466 of human CHIT 1 (NP_003456.1).
序列	SWEKVTGHNSPLYKRQEESGAAASLNVDAAVQQWLQKGTTPASKLILGMPTYGRSFTLASSDTRVGAPATGSGTGPFPFT KEGGMLAYYEVCSWKGATKQRIQDQKVPYIFRDNQWVGFDDESFKTKVSYLKQKGLGGAMVWALDLDFFAGFSCNQ GRYPLIQTLRQELSLPYLPSGTPELEVPKPGQPSEPEHGPSQDFTFCQGKADGLYPNPRERSSFYSCAAGRLLFQQSCPTG LVFSNSCKCCTWN

靶点信息

研究背景	Chitotriosidase is secreted by activated human macrophages and is markedly elevated in plasma of Gaucher disease patients. The expression of chitotriosidase occurs only at a late stage of differentiation of monocytes to activated macrophages in culture. Human macrophages can synthesize a functional chitotriosidase, a highly conserved enzyme with a strongly regulated expression. This enzyme may play a role in the degradation of chitin-containing pathogens. Several alternatively spliced transcript variants have been described for this gene.
基因ID	1118
基因名	CHIT1
Swiss	Q13231
别名	CHIT1;CHI3;CHIT;CHITD

产品验证



Western blot analysis of CHIT1 expressed in Mouse spleen,U-251MG,293T using CHIT1 Rabbit pAb at 1:1000. Secondary antibody: HRP Goat Anti-Rabbit IgG (H+L) at 1:5000. Lysates/proteins: 30ug per lane. Blocking buffer: 5% non-fat dry milk in TBST. Detection: ECL Enhanced Kit. Exposure time: 120s.

实验步骤

访问官网浏览详情: www.ablybio.cn