

# KLRD1 Rabbit pAb

货号: **AYP17880**

## 产品信息

反应	Human,Mouse
宿主	Rabbit
克隆性	Polyclonal
预测反应	
应用	WB
推荐浓度	<b>WB:</b> 1:500 - 1:2000
理论分子量	17kDa/20kDa
实测分子量	25kDa
形式	Liquid
保存条件	Store at -20°C. Avoid freeze / thaw cycles. Buffer: PBS with 0.02% sodium azide,50% glycerol,pH7.3.
偶联物	Unconjugated
阳性对照	Mouse spleen,Mouse lung,Mouse liver
细胞定位	Membrane,Single-pass type II membrane protein
纯化	Affinity purification

## 抗原信息

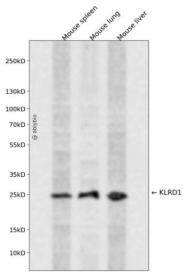
抗原信息	Recombinant fusion protein containing a sequence corresponding to amino acids 32-179 of human KLRD1 (NP_002253.1).
序列	KNSFTKLSIEPAFTPGPNIELQKSDCCSCQEKWVGYRCNCYFISSEQKTWNESRHLCASQKSSLLQLQNTDELDFMSSSQFYWIGLSYSEEHTAWLWENGSAALSQYLFPSEFETFKNCIAYNPNGNALDESCEDKNRYICKQQLI

## 靶点信息

研究背景	Natural killer (NK) cells are a distinct lineage of lymphocytes that mediate cytotoxic activity and secrete cytokines upon immune stimulation. Several genes of the C-type lectin superfamily, including members of the NKG2 family, are expressed by NK cells and may be involved in the regulation of NK cell function. KLRD1 (CD94) is an antigen preferentially expressed on NK cells and is classified as a type II membrane protein because it has an external C terminus. Three transcript variants encoding two different isoforms have been found for this gene.
------	---

基因ID	3824
基因名	KLRD1
Swiss	Q13241
别名	KLRD1;CD94

## 产品验证



Western blot analysis of KLRD1 expressed in Mouse spleen, Mouse lung, Mouse liver using KLRD1 Rabbit pAb at 1:1000. Secondary antibody: HRP Goat Anti-Rabbit IgG (H+L) at 1:5000. Lysates/proteins: 30ug per lane. Blocking buffer: 5% non-fat dry milk in TBST. Detection: ECL Enhanced Kit. Exposure time: 120 S.

## 实验步骤

访问官网浏览详情: [www.ablybio.cn](http://www.ablybio.cn)