

RPL37 Rabbit pAb

货号: **AYP17810**

产品信息

反应	Human,Mouse,Rat
宿主	Rabbit
克隆性	Polyclonal
预测反应	
应用	WB
推荐浓度	WB: 1:500 - 1:2000
理论分子量	11kDa
实测分子量	11kDa
形式	Liquid
保存条件	Store at -20°C. Avoid freeze / thaw cycles. Buffer: PBS with 0.01% thiomersal,50% glycerol,pH7.3.
偶联物	Unconjugated
阳性对照	Jurkat,293T,MCF-7,HeLa
细胞定位	cytoplasm,cytosol,cytosolic ribosome,synapse
纯化	Affinity purification

抗原信息

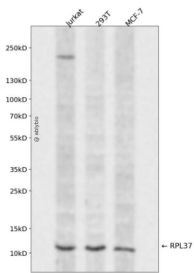
抗原信息	A synthetic peptide corresponding to a sequence within amino acids 1-97 of human RPL37 (NP_000988.1)
序列	MTKGTSSFGKRRNKHTLRCRCGSKAYHLQKSTCGKCGYPAKRKRKYNSAKAKRRNTTGTGRMRHLKIVYRRFRHGFR EGTTPKPKRAAVAASSSS

靶点信息

研究背景	Ribosomes, the organelles that catalyze protein synthesis, consist of a small 40S subunit and a large 60S subunit. Together these subunits are composed of 4 RNA species and approximately 80 structurally distinct proteins. This gene encodes a ribosomal protein that is a component of the 60S subunit. The protein belongs to the L37E family of ribosomal proteins. It is located in the cytoplasm. The protein contains a C2C2-type zinc finger-like motif. As is typical for genes encoding ribosomal proteins, there are multiple processed pseudogenes of this gene dispersed through the genome.
------	---

基因ID	6167
基因名	RPL37
Swiss	P61927
别名	RPL37;L37

产品验证



Western blot analysis of RPL37 expressed in Jurkat,293T,MCF-7 using RPL37 Rabbit pAb at 1:1000. Secondary antibody: HRP Goat Anti-Rabbit IgG (H+L) at 1:5000. Lysates/proteins: 30ug per lane. Blocking buffer: 5% non-fat dry milk in TBST. Detection: ECL Enhanced Kit. Exposure time: 120s.

实验步骤

访问官网浏览详情: www.ablybio.cn